

Genomic DNA Purification Products from MACHEREY-NAGEL



Genomic DNA Mini Spin Kit for In-Vitro Diagnostics
CE-marked for gDNA isolation from whole blood
NucleoSpin[®] Dx Blood



CE-marked in accordance with EU Directive 98/79/EC
For EDTA, citrate, and heparin blood samples
Very convenient handling
Highly reproducible gDNA isolation from whole blood...
... for most reliable results in PCR!

NucleoSpin® Dx Blood

gDNA from whole blood – for *in-vitro* diagnostic purposes

- ▶ **CE-marked in accordance with EU Directive 98/79/EC**
Compliance with IVD directives in the EU
- ▶ **Fits into *in-vitro* diagnostic workflows**
CE-marked gDNA extraction from whole blood
Can be combined with any enzymatic amplification and detection of gDNA
- ▶ **Compatible with common blood collection tubes and anticoagulants**
Suitable for EDTA, citrate, and heparin blood collecting systems
For fresh and frozen blood samples
- ▶ **Highly reliable DNA isolation from whole blood**
Reproducible results for reliable downstream applications
- ▶ **Convenient handling**
Product storage: at room temperature
Precise photometric measurement of DNA possible

Procedure

NucleoSpin® Dx Blood is based on well-established NucleoSpin® silica-membrane technology and provides an easy way to isolate genomic DNA from 200 µl of whole blood.

The blood samples are lysed in presence of chaotropic salts and Proteinase K. Subsequently, genomic DNA is bound to the NucleoSpin® Dx Blood Column. The DNA on the membrane is washed and finally highly pure genomic DNA is eluted.

1. Sample Lysis

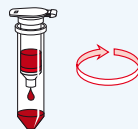
Efficient lysis of fresh or frozen blood (EDTA, citrate, or heparin treated)



Mix Proteinase K, blood sample and Lysis Buffer
15 min incubation

2. Binding of DNA

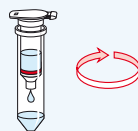
Lysate is loaded in one step



Transfer lysate onto NucleoSpin® Dx Blood Binding Column

3. Washing

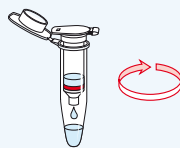
Removal of inhibitors and contaminants by two washing steps



Pipette 1st washing buffer (high salt concentration)
Pipette 2nd washing buffer (low salt concentration)

4. Elution of genomic DNA

Elution in azide free elution buffer, allowing direct photometric DNA quantification



Elute DNA in 50 – 200 µl Elution Buffer

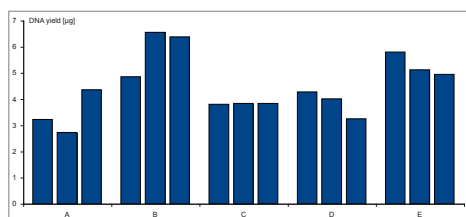
Product at-a-glance

| | |
|---------------------------|---|
| Technology | Silica-membrane technology |
| Format | Mini spin columns |
| Sample material | Whole blood, fresh or frozen EDTA, citrate, or heparin treated |
| Sample volume | 200 µl |
| Typical DNA yield | 3-5 µg (depending on individual blood sample) |
| Typical DNA quality | Ratio A_{260}/A_{280} 1.7 – 1.9 |
| Elution volume | 50 – 200 µl |
| Typical DNA concentration | 40 – 60 ng/µl |
| Processing | Centrifugation |
| Preparation Time | 30 min |



Application data

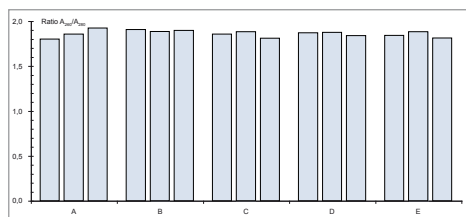
CE-marked procedure – excellent DNA quality – reliable downstream applications



Excellent DNA recovery

DNA was isolated from triplicates of blood samples (200 µl, EDTA) from 5 individuals (A – E).

The DNA yield is 2.7 – 6.6 µg, depending on blood sample.

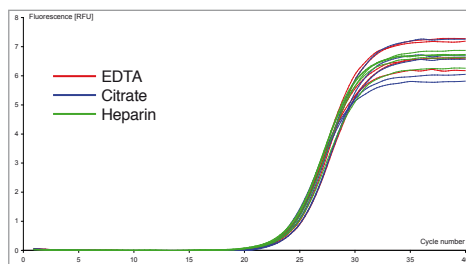


Consistent high purity

Ratio A_{260}/A_{280} was measured for 15 DNA samples (triplicates, from 5 individuals, A – E).

The ratio is consistently between 1.80 and 1.92 indicating excellent DNA quality.

Consistency in DNA quality for best performance in IVD workflows.



Reliable performance regardless the anticoagulant used

DNA was isolated from 15 individual blood samples, stabilized with different anticoagulants: EDTA, citrate, and heparin.

All samples are showing reliable good performance in q-PCR.

Lightcycler[®] (Roche) q-PCR, β -globin specific primer

Compatible with common blood sampling devices, e.g.,

| Blood collecting systems | Manufacturer |
|-------------------------------------|-----------------|
| S-Monovette [®] Li-Heparin | Sarstedt |
| S-Monovette [®] EDTA | Sarstedt |
| S-Monovette [®] Citrat | Sarstedt |
| VACUETTE [®] EDTA | GREINER BIO-ONE |
| BD VACUTAINER [®] K2E | BD Diagnostics |
| K2 EDTA | APTACA |

NucleoSpin® Dx Blood

Reliable DNA isolation for IVD workflows

NucleoSpin® Dx Blood is a generic system for the isolation and purification of genomic DNA from human whole blood samples for subsequent *in-vitro* diagnostic purposes. The kit can be used with fresh and frozen human whole blood treated with EDTA, citrate, and heparin, from common blood collection systems.

NucleoSpin® Dx Blood is designed to be used with any downstream application employing enzymatic amplification and detection of DNA (e.g., PCR) and thus fits perfectly into diagnostic workflows.



Ordering information

| Product | Preps | Cat. No. |
|--|-----------------------|--------------------|
| Mini spin columns NucleoSpin® Dx Blood* CE-marked Mini spin kit for the isolation of genomic DNA from 200 µl human whole blood. | 50/250 | 740899.50/.250 |
| Related products | | |
| Mini spin columns – XS design NucleoSpin® Plasma XS Mini spin kit for the rapid purification of circulating DNA from plasma or serum. High recovery, even of short DNA fragments (down to 50 bp). Concentrated DNA by elution in small volume (5 – 30 µl). | 10/50/250 | 740900.10/.50/.250 |
| Midi spin columns NucleoSpin® Blood L Midi spin kit for the isolation of DNA from up to 2 ml blood. Typical yield of 40 – 60 µg DNA, from fresh or frozen blood samples. Suitable for EDTA, citrate, or heparin treated samples. | 20 | 740954.20 |
| Maxi spin columns NucleoSpin® Blood XL Maxi spin kit for the isolation of DNA from up to 10 ml blood. Typical yield of 200 – 300 µg DNA, from fresh or frozen blood samples. Suitable for EDTA, citrate, or heparin treated samples. | 10/50 | 740950.10/.50 |
| Silica membrane technology – high throughput solutions | | |
| NucleoSpin® 8 Blood | 12 x 8/60 x 8 | 740664/.5 |
| NucleoSpin® 96 Blood | 1 x 96/4 x 96/24 x 96 | 740665.1/.4/.24 |
| NucleoSpin® 96 Blood Core kit 8-well strips/96-well plates for high throughput isolation of DNA from blood and buffy coats. For automated or manual DNA preparation. Scripts for common robotic platforms available. | 4 x 96 | 740456.4 |
| Magnetic bead technology – high throughput solutions | | |
| NucleoMag® 96 Blood For manual or automated isolation of DNA from whole blood. Scripts for common robotic platforms available. | 1 x 96/4 x 96/24 x 96 | 744500.1/.4/.24 |

Visit www.mn-net.com/bioanalysis for detailed information

Your local distributor:

*IVD-CE-marked kit: Not available in all countries, please inquire.

KATEN30051/NUSpin DxBlood em/5/0/11.2009 PD
Printed in Germany

NucleoSpin® Dx Blood

MACHERY-NAGEL

MACHERY-NAGEL GmbH & Co. KG · Neumann-Neander-Str. 6-8 · 52355 Düren · Germany

Germany
Tel.: +49 (0) 2421 969-270
e-mail: tech-bio@mn-net.com

USA
Tel.: +1 484 821 0984
e-mail: sales-us@mn-net.com

France
Tel.: +33 (0) 388 682268
e-mail: sales-fr@mn-net.com

Switzerland
Tel.: +41 (0) 62 388 55 00
e-mail: sales-ch@mn-net.com

