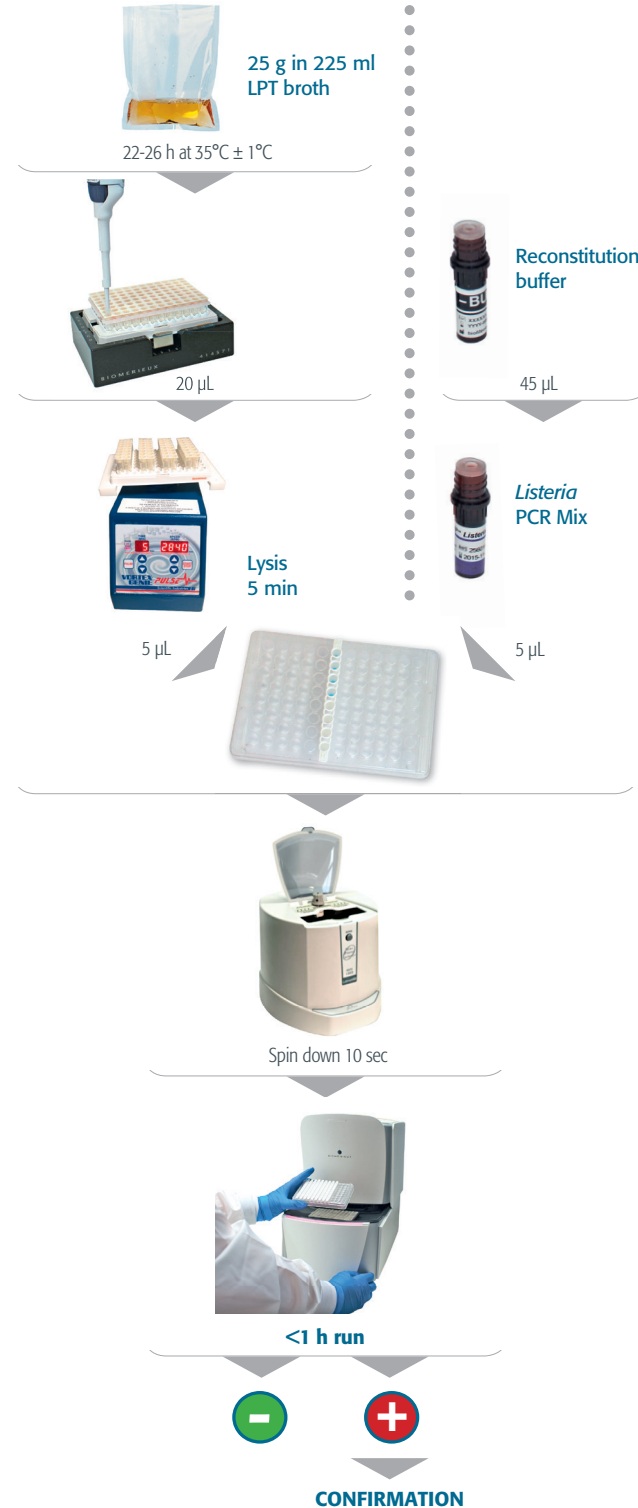


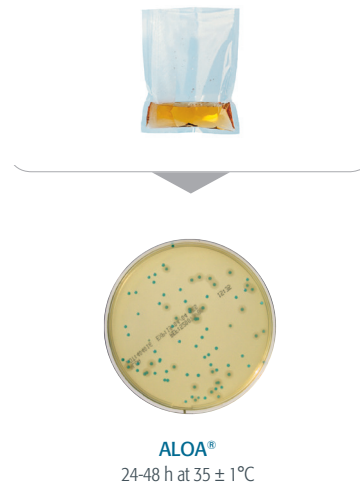
# GENE-UP *Listeria* spp

## General protocol

### 1 Detection



### 2 Confirmation



Listeria spp range	
REF 414059	GENE-UP® <i>Listeria</i> spp Kit 192 tests
REF 414057	GENE-UP® Lysis Kit 192 tests
REF 410848	LPT broth 6 x 225 ml
REF 410846	LPT broth 6 x 100 ml
REF 410845	LPT broth 20 x 10 ml
REF 410849	LPT broth 4 x 3 L
REF AEB520079	ALOA plate x120
REF AEB520080	ALOA media x20
REF 42072	Fraser Broth 20 tubes
REF 414956	Fraser Broth 100 tubes
REF 10300	API LIS 25 strips

© 2015 BIOMÉRIEUX, INC. • BIOMÉRIEUX, THE BLUE LOGO AND GENEUP® ARE USED, PENDING AND/OR REGISTERED TRADEMARKS BELONGING TO BIOMÉRIEUX S.A. OR ONE OF ITS SUBSIDIARIES. • BIOMÉRIEUX, INC., 100 RODOLPHE STREET, DURHAM, NC 27712, USA • WWW.BIOMÉRIEUX-USA.COM • PRN 15-0214-000MK

bioMérieux S.A.  
69280 Marcy l'Etoile  
France  
Tél. : 33 (0)4 78 87 20 00  
Fax : 33 (0)4 78 87 20 90  
[www.biomerieux.com](http://www.biomerieux.com)  
[www.biomerieux-industry.com](http://www.biomerieux-industry.com)

