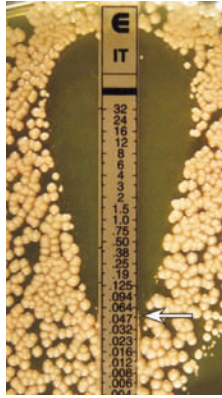


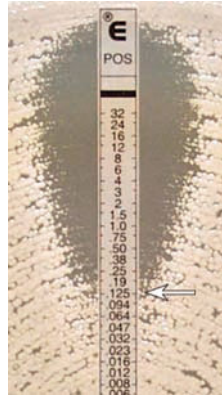


Reading Guide

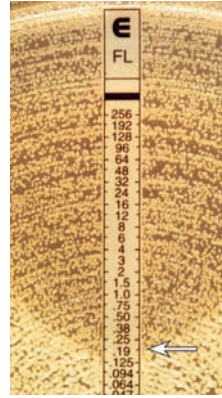
AZOLES



Candida albicans – clear endpoint; **0.047** µg/mL



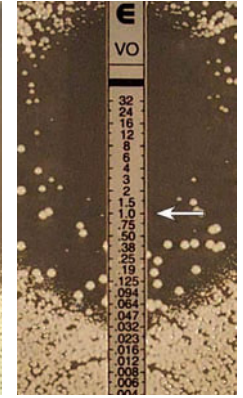
Candida spp. – slim ellipse with trailing microcolonies; **0.125** µg/mL



C. albicans – ignore lawn of microcolonies, read at 80% inhibition; **0.19** µg/mL



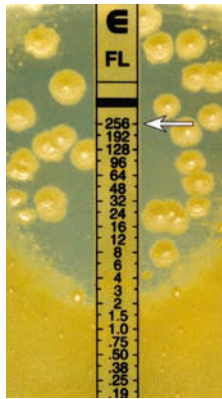
C. parapsilosis – trailing microcolonies; **0.25** µg/mL



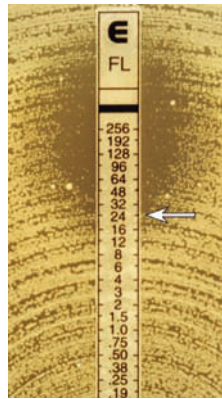
Candida spp. – read all macrocolonies in the ellipse, (potential hetero-resistance); **1** µg/mL

ANTIFUNGAL

AMPHOTERICIN B



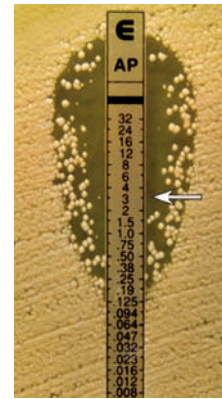
C. krusei – read all macrocolonies in the ellipse; **≥256** µg/mL



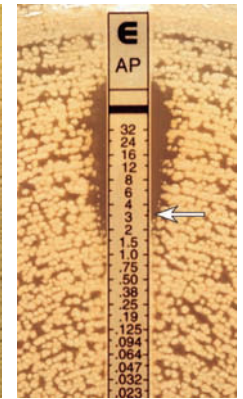
C. glabrata – higher MIC with trailing colonies; **24** µg/mL



Candida spp. – clear endpoint; **0.094** µg/mL

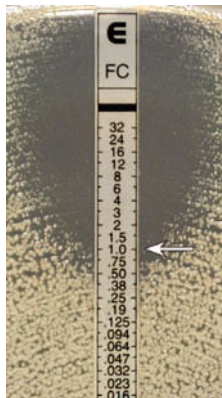


Candida spp. – read at complete inhibition of growth; **3** µg/mL

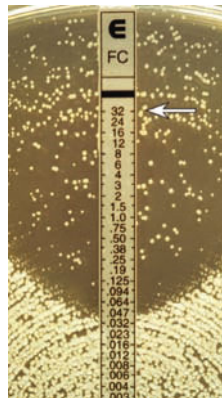


Candida spp. – slim ellipse, read all growth and microcolonies; **3** µg/mL

FLUCYTOSINE



C. tropicalis – read at 90% inhibition. Ignore minute microcolonies; **1** µg/mL



C. albicans – read all macrocolonies in the ellipse; **≥32** µg/mL

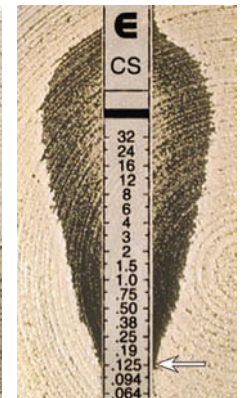
ECHINOCANDINS



Candida spp. – 80%, ignore microcolonies; **0.012** µg/mL



C. albicans – "dip effect" read MIC at bottom of the dip; **0.064** µg/mL



C. tropicalis – ignore regrowth at higher concentrations; **0.125** µg/mL