

MASTERCLAVE 60

Options / kits



INTERNAL DOCUMENT

A.	TRACEABILITY	2
A.1.	Temperature monitoring	2
B.	ACCESSORIES	2
B.1.	Connection to water supply	2
B.2.	Adding cap with septum	3
B.3.	Power supply adapter	3
B.4.	Scaling	3
C.	QUALIFICATION	3
D.	How to dispense the culture media ?	4
D.1.	Dispensing from the bottom valve	4
D.2.	Dispensing from the lid	4
D.3.	8-ways dispensing	5

*kits can be installed by the customer or an after sale service technician

**Options must be indicated on the offer to be installed by the manufacture

MASTERCLAVE 60

Options / kits

A. TRACEABILITY

A.1. Temperature monitoring

This second probe monitors the temperature cycle with a external datalogger like eviSENSE® software.

The temperature probe must be connected to a labguard 2 transmitter



AESMC0008**
Additionnal temperature probe



MD5034
Labguard 2 A PT100 probe input

If eviSENSE® software is not installed, add in complement



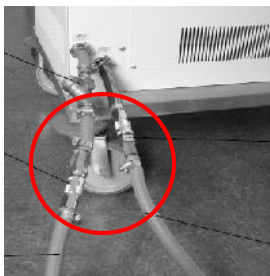
MD5003
Labguard 2 radio receiver

MD6100 : eviSENSE® Express software

Request additional information based on your installation

B. ACCESSORIES

B.1. Connection to water supply



AESAP0619*
Quick connectors kit

To disconnect
MASTERCLAVE 60 of
water supply to be moved

MASTERCLAVE 60

Options / kits

B.2. Adding cap with septum



AESMC0175A
Adding cap with septum

AESMC0176
Septum (50u)

This cap replace the standard one. It allows a sterile addition with a needle.

B.3. Power supply adapter



AESMC0130
Power supply adapter 220V mono

This adapter allows to connect the mediapreparator to the network 220 V mono **during the dispensing phase of the medium**

B.4. Scaling

The scaling of the fluidic network is to be performed by the procedure detailed in the user's manual . Contact Customer service for support

SCHDZ8050 – Scaling solution (1 L)
SCHDZ8052 – Scaling solution (2.5 L)
AESAT0231 – Silicone tube 5M

C. QUALIFICATION

AESMA106504 – QUALIFICATION PROTOCOL IQ/OQ (English)
AESMA106506 - PROTOCOLE DE QUALIFICATION IQ/OQ (french)

MASTERCLAVE 60

Options / kits

D. How to dispense the culture media ?

D.1. Dispensing from the bottom valve



AESMC0090
Priming nozzle for tubing Inner
à 6 to 10 mm
(3 nozzles shipped in standard)



AESMC0145
Priming nozzle for tubing Inner
à 8 to 11 mm

For large flow dispensing



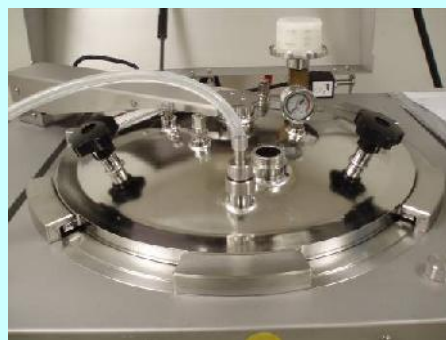
AESMC0138
Kit adapter clamp
contains:
- Adapter clamp (AESMC0136)
- Clamp seal (AESMC0137)
- Cap



AESMC0136
Adapter CLAMP

To order with
AESMC0137 Clamp Seal

D.2. Dispensing from the lid



AESMC0172*
Dispensing from the lid port option
Contains :

- AESMC0160 Modified stirring blade
- AESMC0171 Dispensing tube set
- AESMC0162 Dispensing upper cap
- AESMC0170 sampling nozzle (x3)

MASTERCLAVE 60

Options / kits

D.3. 8-ways dispensing



AESMC0146
8-ways dispensing nozzles

This nozzle connects to the dispensing valve and allows connection of 8 dispensing nozzles ($\varnothing_{\text{int max}} = 4 \text{ mm}$)