

chromID™ ESBL

Chromogenic medium for the Screening of Extended Spectrum β -Lactamase-producing *Enterobacteria* (ESBL)

Isolate ESBL Colonies & Start Patient Isolation



B I O M É R I E U X

Isolate ESBL Colonies & Start Patient Isolation

Microbial resistance through **Extended-Spectrum β -lactamase** was first reported in the early 1980s in Europe and subsequently in the US soon after the introduction of 3rd generation cephalosporins in clinical practice. Today, this resistance mechanism has emerged globally, and ESBL-producing *Enterobacteria* are recognized worldwide as nosocomial pathogens of major importance.

Screening of **ESBL** is needed to sort out patients and to perform a medically and cost effective isolation⁽¹⁾.

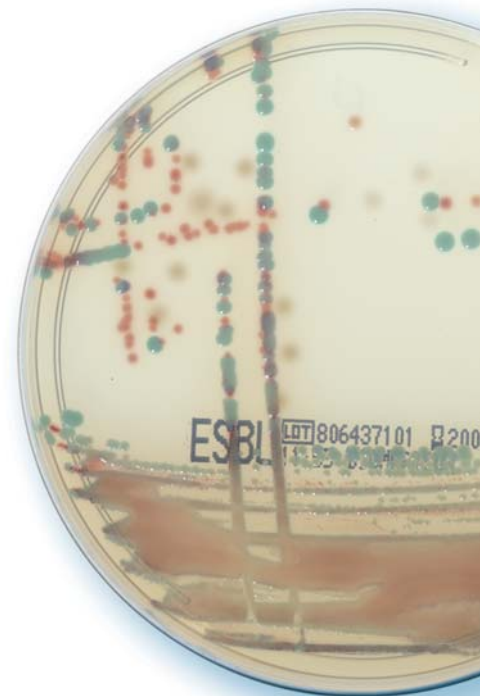
Expertise & Innovation

chromID™ ESBL is a completely new and innovative chromogenic medium designed specifically for the Screening of Extended Spectrum β -Lactamase-producing *Enterobacteria* (ESBL).

Original Principle

(patent pending)

Isolation and detection of **ESBL** based on a rich nutrient capacity with a mixture of antibiotics, including **Cefpodoxime**. This antibiotic is recognised as being the marker of choice for this resistance mechanism⁽²⁾.



Rapid Identification

Immediate and direct identification of the most frequently found *Enterobacteria* after **18 hours** of incubation.*

- *Escherichia coli*: **pink** to **burgundy** colouration of β -glucuronidase-producing colonies
- *Klebsiella*, *Enterobacter*, *Serratia*, *Citrobacter* (KESC): **green/blue** to **browny-green** colouration of β -glucosidase-producing colonies
- *Proteae* (*Proteus*, *Providencia*, *Moraganella*): **dark** to **light brown** colouration of deaminase-expressing strains

* See technical sheet for further information



➔ Easy-to-use

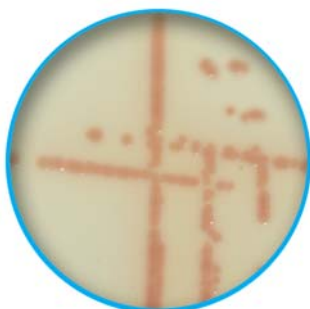
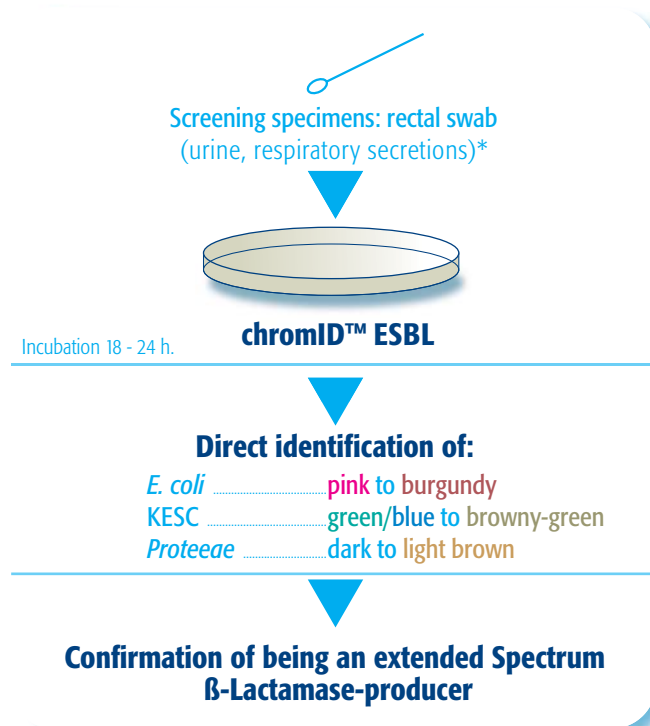
- **Extremely easy-to-read**
- Ready-to-use **chromogenic** medium for **the screening** of **ESBL Enterobacteria**
- Detection of mixed cultures

➔ Reliable Screening

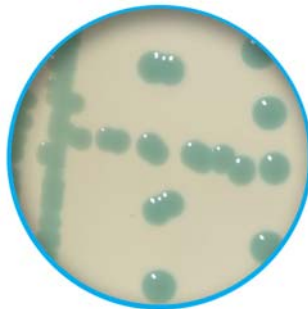
- **Short time-to-result** due to significant reduction in unnecessary confirmations⁽³⁾
- **Selective inhibition** of Gram-positive bacteria and yeasts



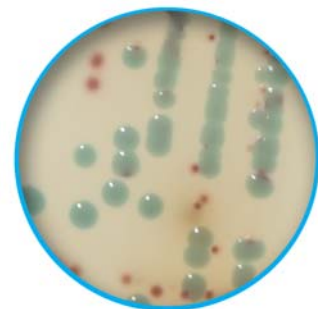
E.coli CIP 103982 - *K.pneumoniae* ATCC 700603 - *Prmirabilis* ATCC BAA-896



E.coli CIP 103982
Incubation 24 hours



K.pneumoniae ATCC 700603
Incubation 24 hours



E.coli CIP 103582 - *K.pneumoniae* ATCC 700603
P.mirabilis ATCC BAA-896
Incubation 24 hours



➔ chromID™ Range

Pre-plated Chromogenic Media for the Screening of Multidrug-Resistant Organisms

new

chromID ESBLRef 43481 - 20 plates

chromID MRSARef 43451 - 20 plates / Ref 43459 - 100 plates
New name of MRSA ID (same reference)

new

chromID VRERef 43002 - 20 plates

Other Chromogenic Media (same references)

chromID S.aureusRef 43371 - 20 plates
New name of S.aureus ID

chromID CandidaRef 43631 - 20 plates / 43639 - 100 plates
New name of Candida ID2

chromID CPS®Ref 43541 - 20 plates / 43549 - 100 plates
New name of CPS ID 3

chromID CPS / Columbia CNA + 5% sheep bloodRef 43463 - 10 plates
New name of CPS ID 3 / Columbia CNA + 5% sheep blood

chromID Strepto BRef 43461 - 20 plates
New name of Strepto B ID

chromID SalmonellaRef 43621 - 20 plates / 43629 - 100 plates
New name of SM ID2

chromID O157H7Ref 42605 - 6 x 200 ml bottles
New name of O157:H7 ID

GUIDELINE & PUBLICATIONS:

(1) Jane D. Siegel, MD; Emily Rhinehart, RN MPH CIC; Marguerite Jackson, PhD; Linda Chiarello, RN MS; the Healthcare Infection Control Practices Advisory Committee. Management of Multidrug-Resistant Organisms in Healthcare Settings, 2006 - CDC - www.cdc.org/

(2) Paterson DL, Bonomo RA. 2005. Extended-spectrum β -lactamases: a clinical update. Clin Microbiol Rev.18(4):657-86.

(3) P. Nordmann, C. Poyart. Evaluation of chromID™ ESBL medium for screening of extended-spectrum beta-lactamase Enterobacteria(ESBL). Poster presented at RICAI 2006, Paris.

12-06 / 002CB99114A / This document is not legally binding. bioMérieux reserves the right to modify specifications without notice / BIOMÉRIEUX the blue logo, CPS and chromID are used, pending and/or registered trademarks belonging to bioMérieux S.A. or one of its subsidiaries / bioMérieux SA RCS Lyon 673 620 399 / Photos : C. Ganer, N. Bouchut, Getty Images / Filmed in France / TL McCANN SANTE Lyon / RCS Lyon B 398 160 242

bioMérieux S.A.
69280 Marcy l'Etoile
France
Tel. : 33 (0)4 78 87 20 00
Fax : 33 (0)4 78 87 20 90

www.biomerieux.com

chromID ESBL is a  marked product

