

**THREE LEVELS OF AUTOMATION  
TO MEET YOUR LABORATORY  
WORKLOAD**

**SEMI-AUTOMATED**

**BactiFlow**<sup>®</sup>

- Microbial Compact Analyzer
- Manual labeling
- Automated reading
- < 20 tests/day



**FULLY-AUTOMATED**

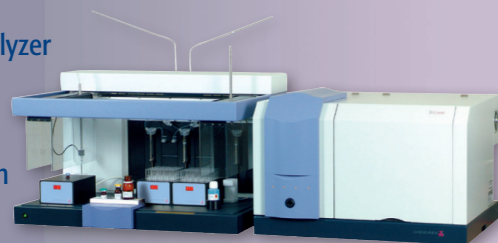
**BactiFlow**<sup>®</sup> ALS

- Medium size analyzer
- Automated labeling
- Automated reading
- 25 tests/batch/hour



**D-Count**<sup>®</sup>

- High-throughput analyzer
- Automated labeling
- Automated reading
- 64 tests/batch/90 min



More than 800 CHEMUNEX<sup>®</sup>  
systems worldwide



50 Years  
of expertise  
in Microbiology

20 Years  
of experience with  
Cosmetic Industries

41 subsidiaries  
with Local supports

01-14 / 9307497 006/GB/A / This document is not legally binding. bioMérieux reserves the right to modify specifications without notice. BIOMERIEUX, the blue logo, BactiFlow, Chemunex and D-Count are used, pending and/or registered trademarks belonging to bioMérieux or one of its subsidiaries or companies. Any other name or trademark is the property of its respective owner. bioMérieux SA RCS Lyon 673 602 393 / Photos: ALS-CHEMUNEX, N. Bouchut, GraphiObsession / Printed in France / 140801 Conseil / RCS Lyon B 398 160 242

bioMérieux S.A.  
69280 Marcy l'Etoile  
France  
Tel.: +33 (0)4 78 87 20 00  
Fax: +33 (0)4 78 87 20 90

[www.biomerieux.com](http://www.biomerieux.com)  
[www.biomerieux-industry.com](http://www.biomerieux-industry.com)



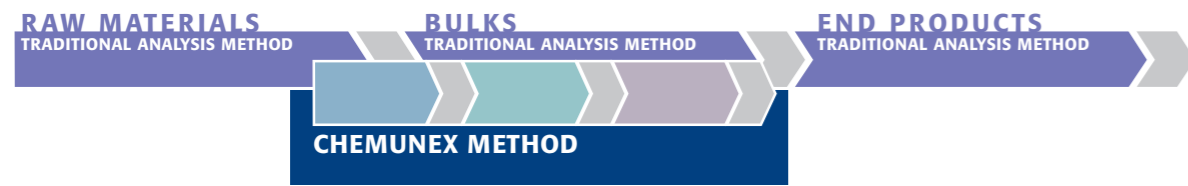
**BE PART  
OF YOUR  
COMPANY'S  
SUCCESS**

Empowering Manufacturing  
and Quality Control  
to team-up for success

# RELEASE YOUR PRODUCTS FASTER WITH

## SAVE UP TO 12 DAYS OF PRODUCTION TIME WITH CHEMUNEX

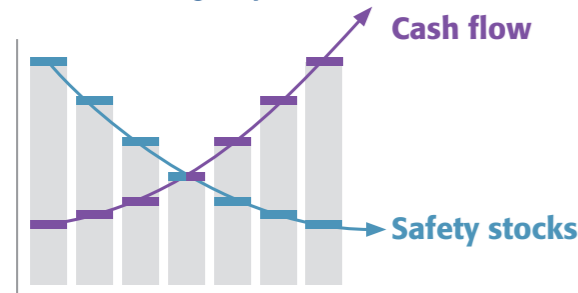
- Increase your manufacturing productivity
- Release faster and speed up your reactivity to market needs



## CHEMUNEX<sup>®</sup> D-Count<sup>®</sup> Reducing the analysis time

### REDUCE YOUR QUARANTINE TIME WITH CHEMUNEX

- Reduce stock levels
- Increase cash flow
- Improve working capital



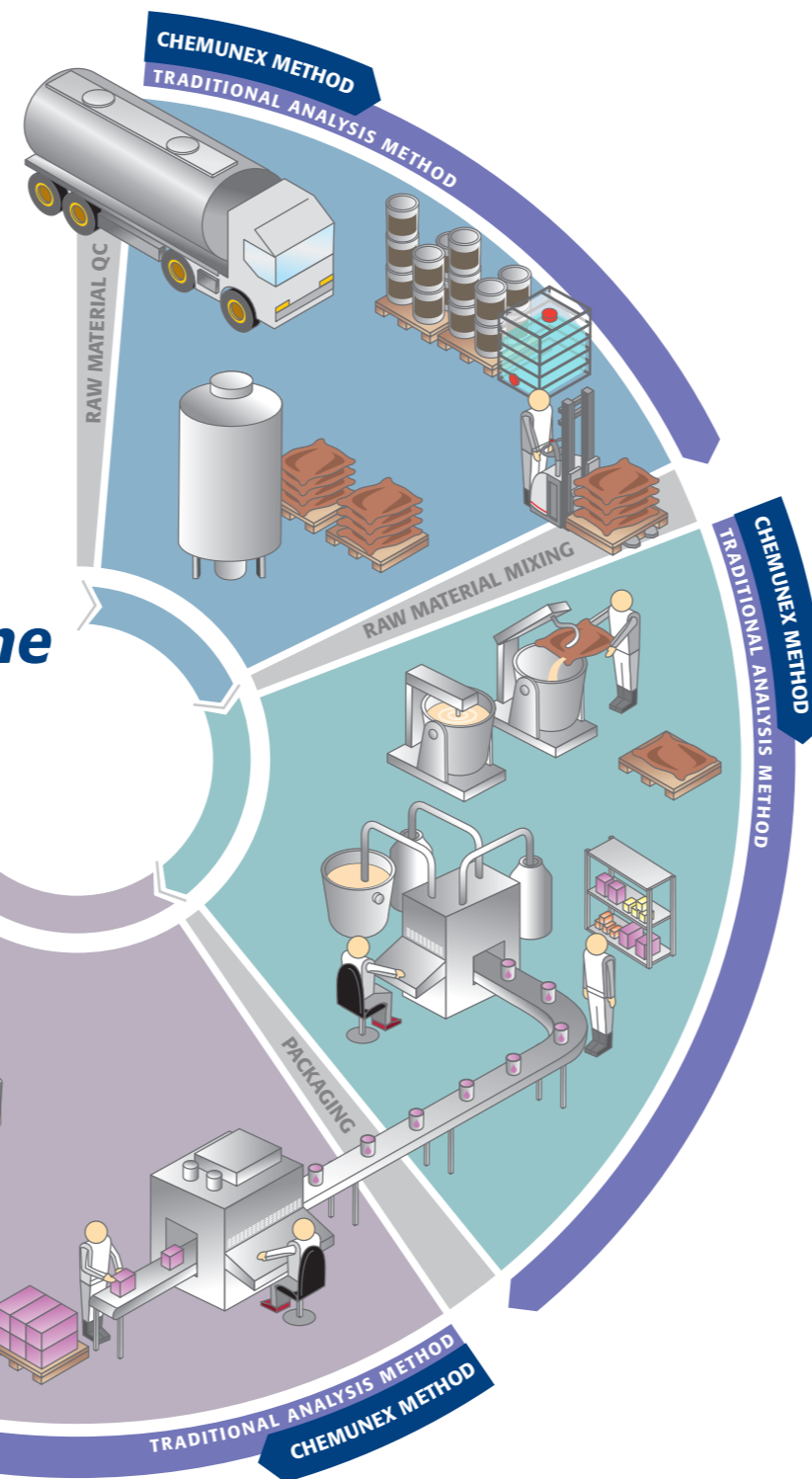
### PROVEN TECHNOLOGY

- Confident Results
  - «GMP Compliant»
  - Direct viable microorganisms detection

### TECHNICAL SUPPORT

- Validation support
- On site training

### FEASIBILITY STUDIES ON YOUR PRODUCTS



# ULTRA RAPID MICROBIAL RESULTS

- Detect Bacteria, Yeasts and Moulds
- Down to 1 cell per gram of product
- 10, 25 or 64 tests per batch
- IQ, OQ, PQ support

#### IN PROCESS

- Raw Materials
- Process Water
- Bulks

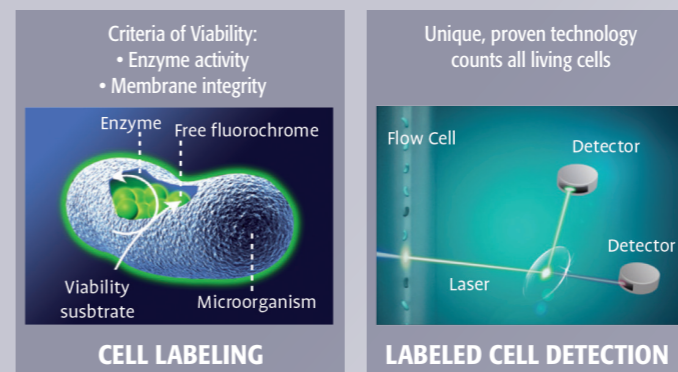
#### FINAL PRODUCTS

- Creams
- Shampoo
- Powders
- Lotions
- Make-up, etc...

### UNIQUE PROVEN TECHNOLOGY

For more than 20 years, cosmetics and personal care companies worldwide have relied on CHEMUNEX<sup>®</sup> technology to deliver safe, high quality products to their customers. These companies not only know they are releasing a safe product but also enjoy the financial benefits of ultra-rapid microbial testing - gaining efficiencies on both the production floor and in the laboratory.

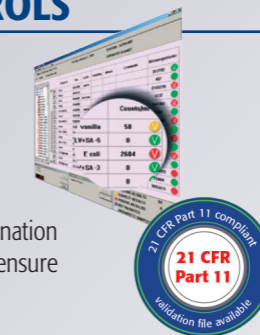
CHEMUNEX's Fluorassure<sup>®</sup> Cell Labeling Technology ensures that all viable microorganisms including those growing in conditions of stress such as nutrient-depleted process water or in the presence of growth inhibitors are labeled without labeling non-viable cells. CHEMUNEX<sup>®</sup> counts the labeled cells and reports the results in microbial cell counts without the need of any calibration curve or interpretation.



### FUNCTIONALITY CONTROLS

- Fluorescent calibration beads
- Negative & positive controls
- Internal standard control

Powerful software uses sophisticated discrimination methods to analyze each data point and ensure only labeled microorganisms are counted.

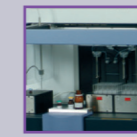


### SIMPLE 3 STEPS-PROTOCOL



#### MINIMAL SAMPLE PREPARATION

- Simple sample pre-treatment
- Load samples onto automate (D-Count<sup>®</sup> and BactiFlow<sup>®</sup> ALS)



#### FULLY-AUTOMATED LABELING (BactiFlow<sup>®</sup> ALS and D-Count<sup>®</sup>)

- 25 or 64 tests capacity per batch
- Adds all required reagents
- Controls incubation temperature and time



#### FAST AND SENSITIVE ANALYSIS

- Up to 50 samples per hour
- Results in count per ml or g, no interpretation needed

### PRESENCE/ABSENCE

#### TVC (Total Viable Count)

Sample Volume	1 g
Sensitivity of the method	1 organism/g of product
Batch time	Down to 90 minutes for 62 samples + 1 negative and 1 positive controls
Products	Shampoo, cream, lotion, spray, raw material, powders, make-up, etc.
Product release	<b>Down to 24 hours</b>

#### YEASTS AND MOULDS

Sample Volume	0,1 g
Sensitivity of the method	10 organisms/g of product
Batch time	Down to 60 minutes for 23 samples + 1 negative and 1 positive controls
Products	Shampoo, cream, lotion, spray, raw material, powders, make-up, etc.
Product release	<b>Down to 2 days</b>

### DIRECT COUNT

#### TVC IN PROCESS WATER (also applicable to raw materials\*, in process control\*, finished products\*)

Sample Volume	1 to 250 ml
Sensitivity of the method	Down to 50 organisms/ml
Range	Linear up to 10 <sup>6</sup> organisms/ml
Batch time	Down to 90 minutes for 64 tests
Products	Process water
Product release	<b>20 minutes</b>

\* Applicability & sensitivity product dependent