



Friends for Life

The Eppendorf *epMotion*® Series:
Discover the variety of automated liquid handling



Enjoy the new *epMotion* series through easy to use and flexible automation of your applications and highly reproducible and accurate pipetting results.

»Automation means precision and reduced workload in one— discover the possibilities for your lab.«

With the new Eppendorf epMotion® family of automated pipetting systems, you will see things in a new light. All your routine pipetting tasks, whether small or large, will be automated with more accuracy and reproducibility than you might have experienced with manual pipetting. Learn how simple it is to switch from manual work to automation.

Robust hardware

- > epMotion systems are available in 3 sizes, all designed with minimal footprint
- > Self checking robotic system, that reduces startup time
- > High precision dispensing tools for 1 to 1000 µL
- > Optical sensor verifies worktable loading before the run



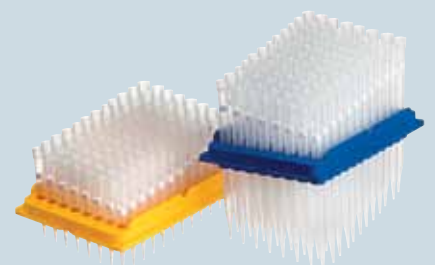
epBlue™—Intuitive Software

- > Enjoy the new concept of user guided software assistants to start right away
- > Learn all the programming flexibility you need in hours, not days
- > Upgradeable to barcode tracking and GLP/GMP software versions



epMotion Accessories , Consumables & Services

- > Get great diversity with large portfolio of accessories
- > As an open platform epMotion works with your favorite labware
- > High quality consumables guarantee high accuracy and reproducibility of your results
- > Choose our premium service to support and maintain your equipment operation



Eppendorf epMotion® Portfolio



Eppendorf epMotion® 5070

epMotion 5070 is the most compact solution for accurate and reproducible automated pipetting. It is a perfect match for all routine applications, such as serial dilutions, reagent distribution, sample transfer from tubes to plates and sample normalization.

Product Features epMotion 5070

- > 4 labware positions, plus three virtual positions
- > Pipetting range from 1 µL to 1,000 µL
- > Compatible with plates up to 384 wells
- > Compatible with tubes from 0.2 mL to 50 mL
- > Liquid level detection without conductive tips
- > Optical sensor checks the loaded deck
- > Safety hood with monitored front door
- > Easily exchangeable pipetting tool



Eppendorf epMotion® 5073

These automated pipetting systems are uniquely tailored for PCR setup and nucleic acid purification, yet retain the flexibility that allows their use as open platforms for diverse automated liquid handling applications. They automate and simplify what are traditionally complex, labor intensive pipetting tasks, saving time and improving the reliability and reproducibility of results.

Product Features epMotion P5073 / M5073

- > 6-position worktable
- > Application specific software assistants, tools and accessories included
- > Option for gripper, 1 thermal module* or Eppendorf 3D-MagSep™ module**
- > CleanCap option for UV decontamination and HEPA air filter

* Available only with P5073

** Already included with M5073



Eppendorf epMotion® 5075

With 12 to 15 worktable positions and many additional features the epMotion 5075 versions have a higher application flexibility.

The epMotion 5075 is the ideal solution for advanced liquid handling demands. It offers the same outstanding accuracy and precision as epMotion 5070 & 5073. All its features make the 5075 versions excellent tools for demanding, small-volume applications such as next generation sequencing, real-time PCR set-up or magnetic bead based purification, as well as cell assays or any routine pipetting task.

Product Features epMotion 5075i / 5075t / 5075v / 5075vt / 5075m

- > Up to 15 worktable positions
- > MultiCon™ PC controller with simulation, network and software upgrade options
- > Automatic exchange of 4 dispensing tools
- > Option for gripper and 1–3 thermal modules
- > System control by touch, mouse, keyboard or network
- > Available ThermoMixer®, Vacuum manifold and magnetic separation options
- > Available as CleanCap versions

Eppendorf epMotion® Feature Overview



Optical Sensor

Checks worktable loading for tips (type and number), labware type, and even liquid volumes in vessels for safe operation



Outer housing

Completely contained housing including door safety mechanism for user and sample protection



CleanCap

with UV lamp for decontamination and HEPA filter for clean air inside. Optional for new epMotion 5073 & 5075 versions



Dispensing Tools

6 high precision dispensing tools from 1 to 1000 μ L are available for programming; single- or multichannel; all calibrated compliant to ISO 8655



Gripper Tool

Allows transport of labware on worktable of 5073 or 5075 versions. Stacking of up to 5 plates is possible



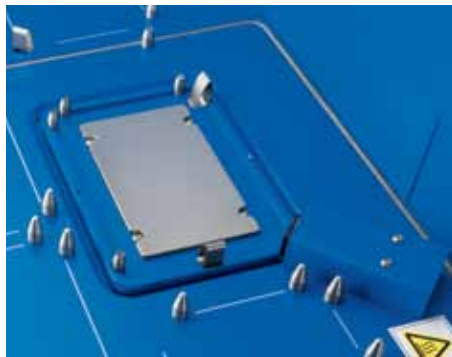
Automatic Tool Exchange

Program the tools you need for your application, 6 dispensing tools and a gripper. Dependent on epMotion version 3 to 5 tools can be provided on the worktable for automatic exchange.



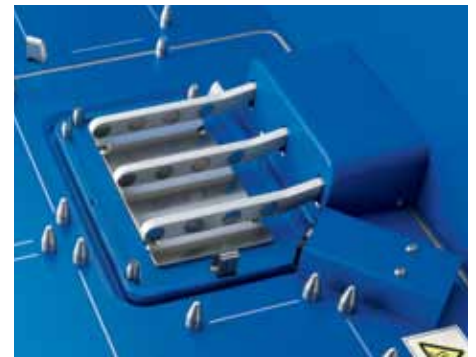
Small Footprint - Large Deck

With 4, 6, 12 or up to 15 positions in SBS/ANSI format the epMotion family gives you all the flexibility you need for your application



ThermoMixer

Fully integrated ThermoMixer with 2^DMix-Control improves yield and application results, e.g. resuspending bacteria pellets or magnetic beads. Peltier element for heating and cooling of sample and/or reagents.



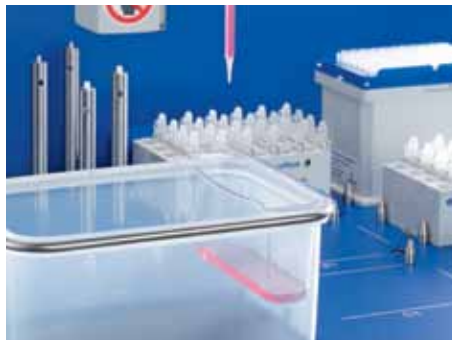
Eppendorf 3D-MagSep™ Technology

Combination of magnetic finger module and ThermoMixer facilitates magnetic separation, mixing and temperature control in one location



Integrated Vacuum Station

Loaded and unloaded with the gripper, the vacuum station adapts automatically to any filter plate type. Silent operation of internal pump with no need for extra tubes, wiring or reservoir maintenance



Liquid waste tub

Extra reservoir with large working volume can be mounted in waste box of epMotion and maximize deck space



Intuitive software

The epMotion with epBlue software offers the easiest to learn and most convenient way to use an automated liquid handling system.

International Users Love epMotion®!

Whether it is genomics applications, like PCR set-up, SNP detection, next generation sequencing, or nucleic acid purification, complex assay set-up or cell culture applications, read what scientists worldwide say about epMotion.

»» *The Eppendorf 5075's improvements to accuracy, reproducibility, and throughput has changed how we approach almost everything we do in the lab. In addition, the 5075 was instrumental in the development and validation of our novel HIV phenotyping test.* ««

Richard Gibson

Assistant Director · University
Hospital Translational Laboratory ·
Cleveland, USA

»» *My group has made great use of the epMotion 5073. It provides sufficient flexibility for my group to use routinely for 384 well qPCR setup, enabling us to increase throughput and reduce reagent usage. More importantly, the modular nature of the design and flexibility of the instrument runs, mean we have been implementing in a range of other molecular biology applications that benefit from automation, such as scalable plasmid construction. The ability to upgrade this instrument with gripper arm, temperature control and both single and multichannel capabilities means we are in a good position to adapt rapidly as new protocols are developed.* ««

Dr. Steven M. Pollard

UCL Samantha Dickson Brain Cancer Unit · University
College London · London, United Kingdom

»» *We are using our three epMotion 5075 systems already for several years for automated gDNA purification from plant and fungi, PCR setup for routine analysis of fungicide and herbicide resistance genes and other general liquid handling tasks. The epMotion automation has significantly reduced our work load for these assays and made our workforce more efficient, because team members can now focus on downstream applications. We also appreciate the better reproducibility of results and the high flexibility we get with this easy to handle automation systems.* ««

Bernhard Jaser

Senior Research Fellow · Agrobiologic Research &
Consulting · EpiLogic GmbH · Freising, Germany

»» *We highly value the epMotion 5075 TMX for its accuracy, easy programming, and its flexibility in adapting to different protocols and throughputs. We obtain excellent results in our real-time PCR assays and sample library preparation for our NextGen sequencing protocols.* ««

Gisela Mir PhD

Head, Molecular Genomics facility · Cancer
Research · Peter MacCallum Cancer Centre ·
Melbourne, Australia

» We are happy to use the epMotion 5070 for our Anti-cancer Drug Screening as it accelerates our pipetting work for viability and apoptosis cell assays to combat a cancer cell line with the reproducibility that we need. «

Gilberto C. Franchi

Pharmacist research fellow · University of Campinas · São Paulo, Brazil

» epMotion 5075 has been installed in our lab since two years and is working satisfactorily. The system is completely open with respect to labwares and consumables. The features we liked in the instruments being the contact free liquid level sensing, its volume accuracy and low maintenance cost. We also appreciate the support extended by Eppendorf India in our Application setup. «

Dr. D. Srinivas Reddy

Special project Scientist · PTTC, International Crops Research Institute for the Semi-Arid Tropics · Hyderabad, India

» Our group has made fantastic use of the epMotion 5070 and it now forms an indispensable core of our small and heavily used qPCR facility. Its reliability, accuracy, ease-of-use has been key to the success of our qPCR experimentation. The ability to accurately and reproducibly pipette low volumes has both increased the quality of our results and kept consumable costs under control. This has meant more results for the same money, always something to bring a smile to the laboratory head. «

Dr. Chris Winefield

Senior Lecturer in Plant Biochemistry and Molecular Biology · Lincoln University, New Zealand

» epMotion P5073c is a robust system and yet with the flexibility which satisfied our laboratory's multiple functions. «

Dr. Masafumi Inoue

Group Leader (Molecular Diagnostics Group) · Experimental Therapeutics Centre (ETC), Agency for Science · Singapore



» The Eppendorf epMotion 5070 has been installed in our lab and is working satisfactorily. The system has been used to automate some of our assays such as preparation of cDNA, and setting up RTQ PCR assays in 96-well format. In all we are more than satisfied with the performance of the system and support provided by the technical experts. «

Dr. M. Padigaru

Associate Director – Biomarker discovery · Piramal Life Sciences Ltd. · Mumbai, India



Eppendorf epMotion[®] 5070

The epMotion 5070 is the most compact solution for accurate and reproducible automated pipetting. It is a perfect match for all routine applications, such as serial dilutions, reagent distribution, sample transfer from tubes to plates and sample normalization.

- > 4 labware positions, plus three virtual positions
- > Pipetting range from 1 μL to 1,000 μL
- > Compatible with micro- and PCR plates up to 384 wells
- > Compatible with tubes from 0.2 mL to 50 mL
- > Liquid level detection without conductive tips
- > Optical sensor checks the loaded deck
- > Safety hood with monitored front door
- > Easily exchangeable pipetting tool



Eppendorf epMotion[®] 5070 CB

With **the epMotion 5070CB** all the benefits of automated pipetting are available for liquid handling tasks inside a cell culture bench or fume hood. Cell maintenance is one of the most repetitive tasks in life science research. The epMotion 5070 CB allows you to automate key processes such as seeding cells, media changes, or performing assays e.g. cytotoxicity. It enables you to handle 6, 24 or 48 well plate or even denser formats from 96 to 384 wells.

- > Same as 5070, plus
- > Light barrier beam—monitors the closure of the bench hood for safety
- > Pre-programmed cell culture labware
- > Sterile pipet tips available
- > Autoclavable pipetting tools



Eppendorf epMotion® P5073c

The epMotion P5073—2 systems in one.

First, a tailored workstation for automated PCR set-up in 96 or 384 plate format. The new EasyCon™ tablet and PCR assistant software fulfills the highest expectations for ease of use, guiding the user stepwise through the process.

Second, a flexible system for automation of labor intensive and complex pipetting tasks with the epBlue software, which addresses diverse liquid handling routines in today's labs.

The epMotion P5073 is configured with all accessories and tools required for PCR set-up.

Due to its remarkable accuracy, the epMotion P5073 sets the standard for automated pipetting and real-time PCR set-up.

- > Six SBS/ANSI worktable positions
- > Automatic exchange of 2 pipetting tools and gripper
- > EasyCon tablet for touch or mouse control and USB data transfer
- > CleanCap option with UV lamp for decontamination and HEPA filter for clean air inside
- > P5073 has option for 1 thermal module for heating and cooling (0–110°C)
- > User guided PCR assistant for easy application control
- > PCR set-up accessories included:
 - Thermoblock PCR 96, Rack for 24 Eppendorf Safe-Lock tubes and 2 pipetting tools



Eppendorf epMotion® M5073

epMotion M5073 – nucleic acid preparation and flexibility for more.

Use dedicated Eppendorf MagSep reagent kits with the epMotion M5073 for walk away DNA or RNA preparations from 1 to 24 samples from various sources. The EasyCon tablet and Prep assistant software guide step by step through the easy and fast automation process.

The new reuse tips feature and epT.I.P.S. Motion SafeRack tips can help to reduce tip consumption during wash steps.

More flexibility and complexity for various liquid handling tasks can be programmed with the established epBlue software that is installed on the EasyCon as well. Automate tedious, multi-step pipetting tasks in minutes, like plate reformatting, serial dilutions, sample transfer, normalizations, pooling, hit-picking, assay set-up or cell handling.

- > Same as P5073, plus
- > Eppendorf 3D-MagSep module for magnetic separation
- > Separate Liquid Waste
- > Nucleic acid purification accessories included: Rack 24 PrepRack, Reagentrack and TS 50 & TS 1000 pipetting tools
- > User guided Prep assistant for easy MagSep reagent kit applications

Combination of magnetic finger module and ThermoMixer facilitates magnetic separation, mixing and temperature control in one location





Eppendorf epMotion® 5075I

The epMotion 5075I is the perfect solution for more complex pipetting tasks. It offers the same precision and accuracy as the epMotion 5070 & 5073, making it the ideal tool for demanding applications and higher throughput.

The 15 positions and the automatic tool exchange expand the application range to handle complex patterns and higher sample numbers. With heating and cooling and the gripper option, the epMotion 5075I is one of the most flexible automated liquid handling systems available.

- > 15 SBS/ANSI deck positions
- > Automatic exchange of 4 pipetting tools and gripper
- > Plate stacking – 5 microplates or 2 deepwell plates can be stacked by the gripper
- > 3 thermal module options for heating or cooling of samples or reagents
- > CleanCap option – UV lamp and HEPA filter for

- decontamination and clean air conditions
- > MultiCon PC controller to run preinstalled epBlue software by touch or mouse and keyboard
- > Upgradeable for barcode tracking and GLP/GMP software versions
- > LH assistant for general liquid handling tasks



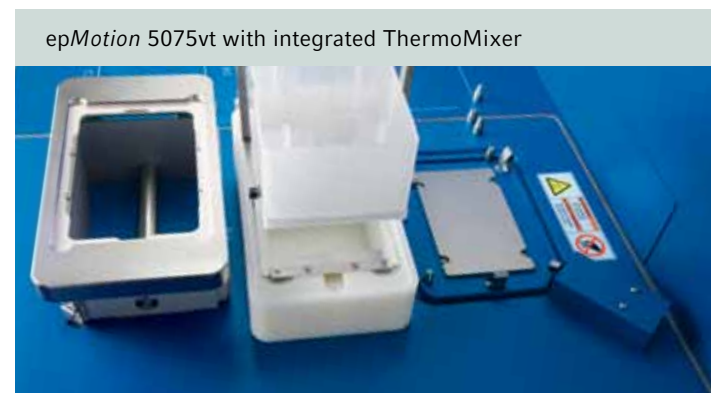


Eppendorf epMotion® 5075v

The **epMotion 5075v** is all about productivity. With its integrated vacuum station the epMotion 5075v allows true walk-away automation of purification protocols that rely on vacuum filtration.

- > Same as 5075I, plus
- > 12 SBS/ANSI deck positions
- > Integrated vacuum pump—silent operation, no tubing, wiring, and reservoirs to maintain

- > Vacuum station is fully integrated and automatically adapts to filter plates controlled by software
- > Gripper for plate & labware transport
- > 3 thermal module options (2 in case of 5075vt)
- > Also available as 5075vt version with integrated ThermoMixer



epMotion 5075vt with integrated ThermoMixer



Eppendorf epMotion® 5075t

The **epMotion 5075t** includes an integrated ThermoMixer module to mix, heat or cool samples and reagents. The ThermoMixer can be loaded and unloaded with the gripper and pipetting to the mixer is possible before and after mixing steps. It is fully software controlled enabling pipetting onto other worktable positions while the mixer is in operation.

- > Same as 5075i, plus
- > Integrated ThermoMixer with 2ndMix-Control technology
- > Temperature control range 15°C below RT to 95°C
- > Automatic securing of labware for mixing up to 2000 rpm
- > 14.5 deck positions, 14 SBS/ANSI plus small position for special reagent reservoir rack (3 reservoirs)
- > 2 thermal module options





Eppendorf epMotion® 5075m

The epMotion 5075m is the most flexible member of the epMotion family of automated pipetting systems. With a large number of worktable positions and the mixing, temperature control and magnetic bead separation abilities it's ideally suited for various applications in the lab.

- > Same as 5075t, plus
- > Eppendorf 3D-MagSep Technology—Facilitates magnetic separation, mixing and temperature control in one location

- > Dedicated Eppendorf MagSep reagent kits for nucleic acid purification from 1–24 samples
- > Add optional PrepRack and ReagentRack for use of Eppendorf MagSep kits. Just open bottles
- > 3 × Prep assistants for user guided automation of nucleic acid purification with Eppendorf MagSep kits
- > 4 × PCR assistants to streamline PCR set-up workflow



epMotion® Software—Simplify Your Programming

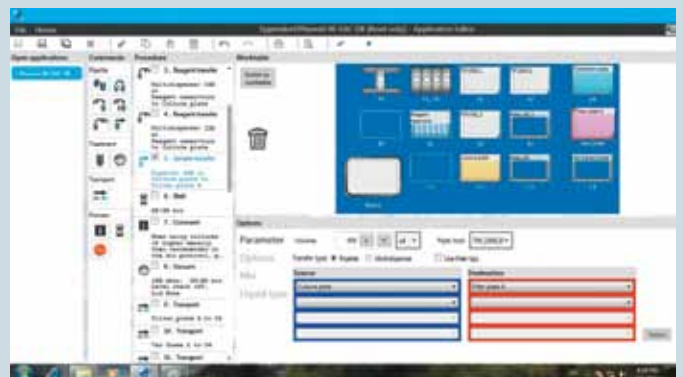
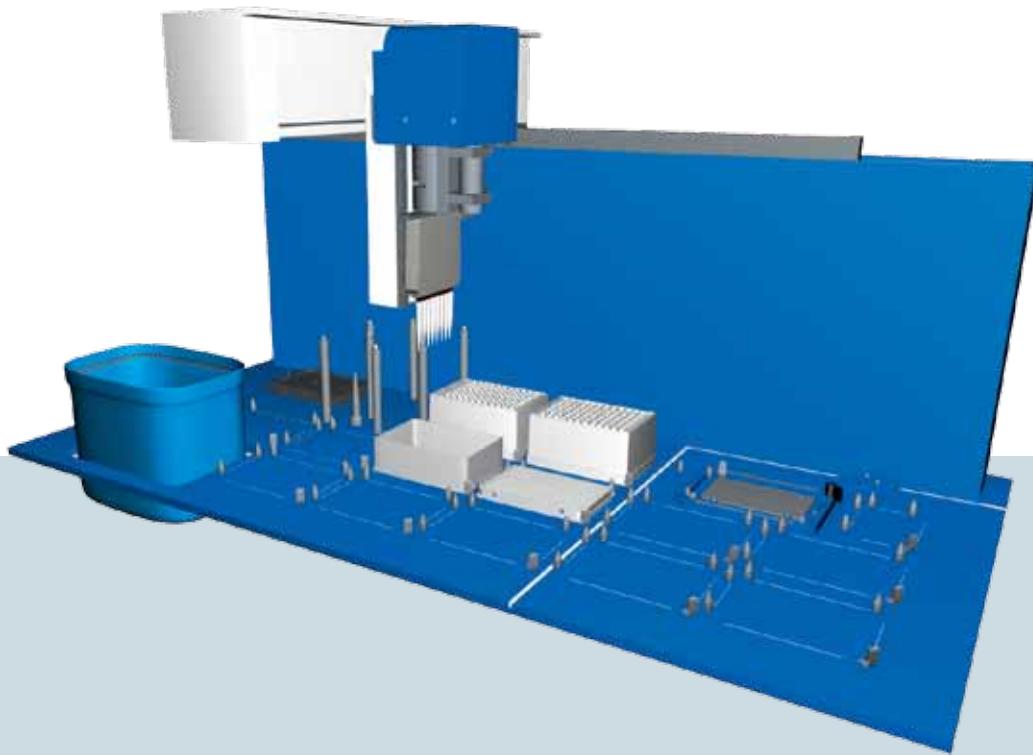


epBlue—intuitive operation and programming

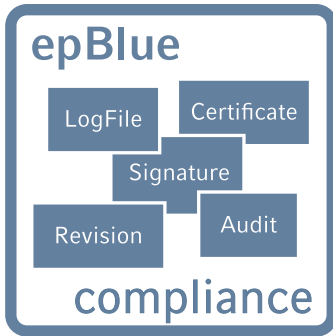
Simple and clear. epBlue is pre-installed on every epMotion system and guides you through your everyday pipetting tasks: Choose your objective in the home section and follow the epBlue commands from left to right with guided menus and the

consistent, touchable structure. With the unmatched ease-of-use of epBlue, even complex methods can be generated in minutes.

- > Intuitive graphical user interface
- > Pattern recognition for easy programming of complex patterns in 96 or 384 wells
- > Large labware database—use almost any possible labware
- > Liquid classes—for highest performance of pipetting various liquids
- > CSV import of files for normalization and cherry picking
- > Safe operation through 3D run simulation. Before starting your application, you can simulate the run. (only MultiCon versions)
- > User management (only MultiCon versions)



Upgrades for the Features You Need



epBlue GxP—Solution for automated pipetting according to 21 CFR part 11 regulations

The GxP solution was developed according to GAMP 5 and tailored for organizational and process requirements of 21 CFR part 11, 58, 211 and 820, GLP, GMP and GCP.

The epBlue GxP solution consists of the epMotion automated pipetting system, software and services that are designed to significantly shorten the timeline of your process validation and qualification.

Eppendorf as a supplier has already taken care of the major part of the regulatory required system validation and qualification. Thus the user can focus on their part of the application validation.

- > Complete electronic documentation
- > User level management and access control
- > Audit trail and log file
- > Revision management
- > Configurable workflow management
- > Export and archiving of digitally signed documents
- > epBlue ID tracking using bar codes (optional extension)

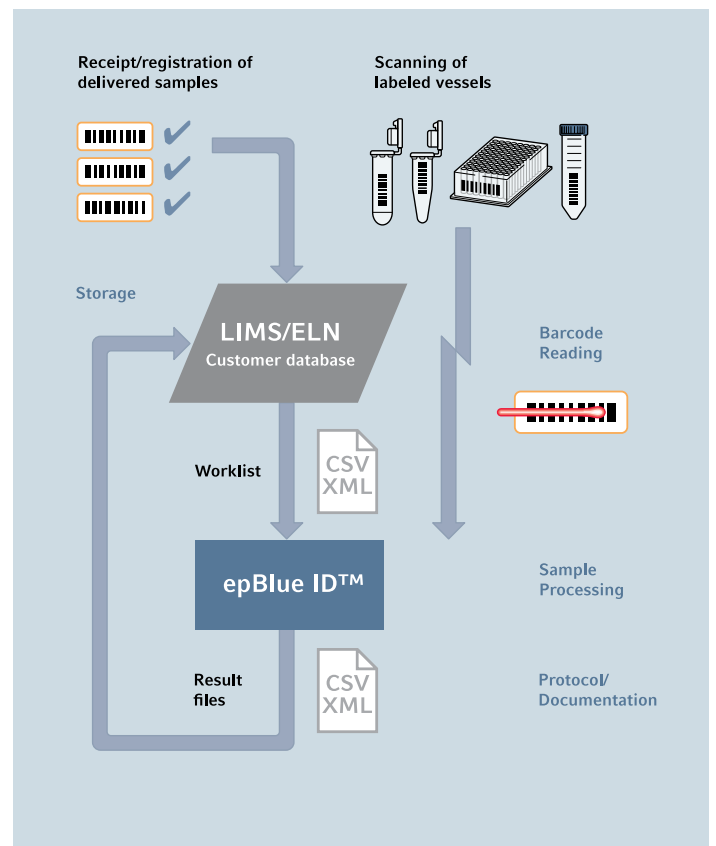


epBlue ID—Secure barcode scanning–tracking–documentation

epBlue ID software module allows for safe data exchange with laboratory information management systems (LIMS) and simplifies external communication. The barcode scanner enables the user to record barcodes on all tube

types and microplates. Reagents can be documented with type and lot number. After manually scanning the barcodes, epBlue ID will store the IDs in its database from which data can be verified at any time. A result file containing sample IDs and their final location is generated by epBlue ID when the liquid handling process is completed. The result ID list can then be exported to a network drive and uploaded to a LIMS.

- > Visual guidance of the scanning process
- > Documentation of reagent type and batch
- > Compatible with LIMS generated worklists



Ease-of-Use and Flexibility

The Eppendorf EasyCon tablet is optimized for simple and comfortable access to liquid handling automation. Its space saving size is designed especially for the smaller members of the epMotion family, 5073. It has a large color display and is operated by touch or mouse control. The key feature of the Eppendorf EasyCon tablet however is its flexibility with pre-installed software assistants for easy and fast application runs and the epBlue studio software for programming more complex liquid handling tasks.

- > Touch screen or mouse control
- > Pre-installed software assistants
- > epBlue software
- > 4 × USB 2.0 ports for data transfer
- > Data backup
- > CSV and XML file exchange
- > No extra power supply needed

The Eppendorf MultiCon PC versions define a new dimension in ease-of use and safety. As premium product, an industrial PC is included which ensures maximum working reliability by standardization and the multiple quality checks each individual PC has undergone. The MultiCon controller fulfills high expectations at best performance for the epMotion 5075 versions.

- > Simplify—Large touch screen or mouse and keyboard control
- > Network interface allows the remote control of epMotion via direct Ethernet connection
- > Pre-installed epBlue software & assistants
- > CSV and XML file exchange via USB or LAN
- > Safe operation due to database repository
- > Run simulation with 3D-view on the workstation
- > 5 USB & 2 Ethernet ports
- > Upgrade option to epBlue ID software
- > Development in compliance to GAMP 5
- > Upgrade option to epBlue GxP software



User Guided Programming for Everyone

The innovative Eppendorf software assistant concept is a new level of user friendly programming of automated liquid handling systems.

With a few simple questions the user is guided through the programming of the automation process. It is a quick and easy way to use epMotion and start methods with only little training efforts. Various application specific assistants are available for PCR set-up, nucleic acid preparation or general liquid handling, and Eppendorf will continuously extend the range of assistants in the future.

The new software assistants are so intuitive that any lab member can start automation without extensive programming expertise now.

- > Quick access by desktop icons
- > User guided step-by-step programming
- > Settings are stored for next use
- > Methods can be saved for further modification in epBlue software
- > 3x Prep assistants
- > 4x PCR assistants
- > 7x LH assistants

The 4 PCR assistants are designed to streamline and automate the whole PCR set-up workflow:

- > Compose Mastermix
- > Normalize Concentrations
- > Create Dilution Series
- > Setup Reactions

The 3 Prep assistants provide a step-by-step guided workflow of automated nucleic acid purification with the MagSep reagent kits on the epMotion M5073 or 5075m. In short; unscrew caps from reagent tray, select number of samples, select labware for purified DNA/RNA, choose elution volume between 25 to 200 μ L and start run.

The 7 LH assistants facilitate easy access to general liquid handling tasks

- > Reformat
- > Normalization
- > Wash
- > Assay set-up
- > Cherry picking
- > Dilution series
- > Pool samples

The figure displays four screenshots of the Eppendorf software interface, each illustrating a different programming assistant:

- LH assay labware select:** Shows a file explorer view where users can select labware (e.g., PCR plates) for an assay.
- PCR normalization:** Displays a table for configuring PCR normalization parameters. The table has columns for 'Well', 'Volume', 'Concentration', 'Dilution', and 'Final Volume'.

Well	Volume	Concentration	Dilution	Final Volume
1	100	100	100	100
2	100	100	100	100
3	100	100	100	100
4	100	100	100	100
5	100	100	100	100
6	100	100	100	100
7	100	100	100	100
8	100	100	100	100
9	100	100	100	100
10	100	100	100	100
11	100	100	100	100
12	100	100	100	100
- PCR setup arrangement plate:** Shows a 96-well plate layout where users can assign specific reagents or samples to individual wells.
- LH Pool work table:** Displays a grid of wells (A1-C1) used for pooling samples, with labels for 'Waste', 'TEMP1', 'TEMP2', 'C1', 'C2', and 'C3'.

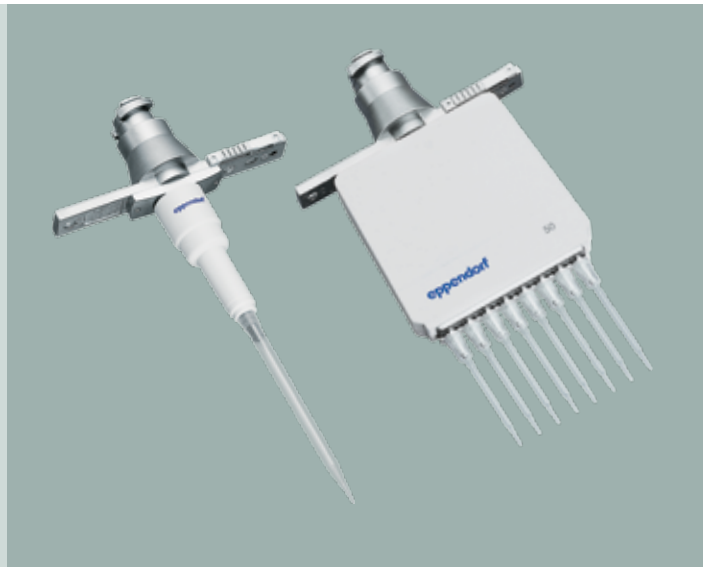
Accuracy and Reproducibility Delivered

epMotion pipetting tools

Based on Eppendorf classic air cushion pipetting technology

- > Free-jet pipetting, no tubes, no wires, no air bubbles to minimize cross-contamination
- > Excellent pipetting precision, below 2% CV at 1 μL *
- > Volume range: 1–50 μL ; 20–300 μL and 40–1000 μL
- > Single or 8-channel
- > Autoclavable & easy to maintain
- > Automatic calibration warning
- > ISO 8655 compliance

*Eppendorf application note 168: »Evaluation of the Eppendorf epMotion Pipetting Tools using the Artel MVS®.«



epT.I.P.S.® Motion

Special tips for use in automated systems. Each tip is inspected for straightness prior to packaging.

This ensures a perfect handling of 96- and 384-well micro- and PCR plates

- > Color-coded tray for easy volume identification
- > Non-carbonized, pure virgin polypropylene, both tip and box are recyclable
- > Standard, filter, and sterile tips available
- > PCR clean quality grade for filter tips
- > Also available as eco-friendly reload system

Re-use tips feature

The epMotion 5073 and 5075 systems can re-use tips as e.g. economical choice for multiple wash steps of the same well. Here special epT.I.P.S. Motion SafeRack tips are recommended

- > Individual compartments to avoid cross-contamination between used tips
- > Available as standard and PCR clean quality for 50 and 1,000 μL



Dedicated Reagent Kits

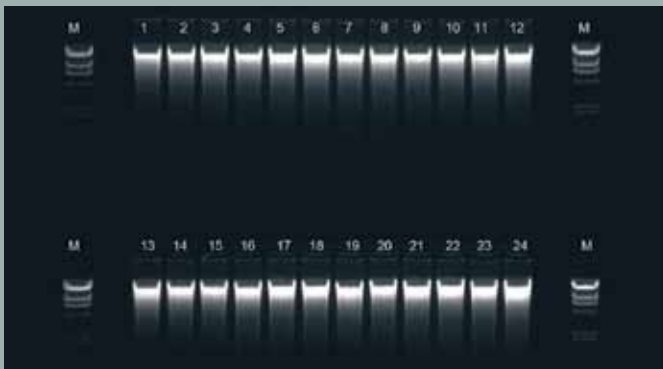
Eppendorf MagSep reagent kits for automated nucleic acid purification of 1 to 24 samples—free-up your time for scientific work

Whether your sample is tissue, cells, bacteria, blood or cell-free body fluids, the MagSep Tissue gDNA kit, MagSep Blood gDNA kit or MagSep Viral DNA/RNA kit are your smart solution for automated nucleic acid purification. The kits are designed for rapid automated small-scale preparation of highly pure nucleic acids based on robust magnetic bead separation using the epMotion M5073 or 5075m. All reagents and tubes that are needed for extraction and elution for 96 samples are provided (e.g. Proteinase K and all buffers).

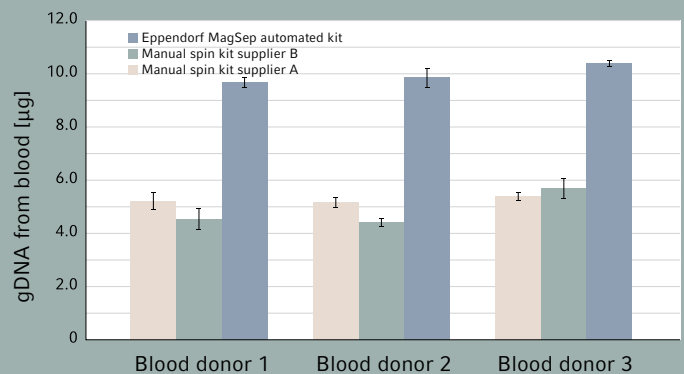
The ready to use reagents come in special trays for 1 to 24 preparations. Just open the vessels, place the tray on the worktable and epMotion will do all the pipetting. If less than 24 samples are run, the tray can be stored for later use.

Benefit from minimal hands-on time with ready to use reagents, special epMotion reagent tray and easy software assistants. Get superior yield and purity versus manual or other automation methods by optimized chemistry and 3D-MagSep technology with the epMotion (typical ration A260/280 is 1.8 to 1.9) which guarantees reliable and reproducible results in various downstream applications, like genotyping, sequencing, real-time PCR, other enzymatic or chemical reactions.

- > Automatic recognition of kit type and available reagents
- > Variable use of 1 to 24 sample reagents per tray and intermediate storage possible
- > 25 to 200 μL variable choice of elution volume (concentration vs. yield)
- > Eppendorf DNA LoBind Safe-Lock tubes included for maximum DNA recovery



Gel analysis of 24 mouse tail samples purified with MagSep gDNA tissue kit; typical yield 10 μg high molecular weight DNA out of 10 mg tissue; 7.5 μL of 75 μL loaded on gel.



Typical yield of 9 μg gDNA from 200 μL of blood purified via MagSep gDNA blood kit versus manual process of purification (n=3).



Flexibility with Established Labware Database

The *epMotion* systems are known as a flexible and open automation platform for liquid handling applications. One part of its great flexibility is the compatibility with various different labware that are needed for specific

customer applications. Tubes, plates, vessels, adapters etc. from various vendors are compatible with the *epMotion* and our labware database with more than 1,200 files is constantly growing.

Vendor	<input type="text" value="Show all or select..."/>
Type	<input type="text" value="Show all or select..."/>
Format	<input type="text" value="Show all or select..."/>
	<input type="button" value="Search"/>

Please select a vendor, a format or/and a type and press "Search" to show Products! Combinations are also possible.

Search filter for Labware download from epMotion VIP page

> www.eppendorfna.com/automation



epServices for epMotion® — Keep Your Process in Motion

It's all about accuracy and reliability

The epMotion and its dispensing tools are precision instruments. As such, they require regular maintenance, which help prevent failures and keep your processes moving forward. Regular calibration of the dispensing tools will ensure system accuracy, precision and reliability.

Our Performance Plan options will allow you to maintain premium functioning of your epMotion over the life of the system. Eppendorf's highly skilled service technicians perform the adjustments and repairs to return your system to manufacturer specifications.

Less effort, more impact

Our global certification services for epMotion GxP comply with FDA 21 CFR Part 11, EU GMP Annex 11, GLP and GAMP 5 regulations. We provide installation and Operational Qualification (IQ/OQ) services and the accompanying

documentation to assist in the validation process of the instrument and the software. Your employees will receive extensive training and system certification.

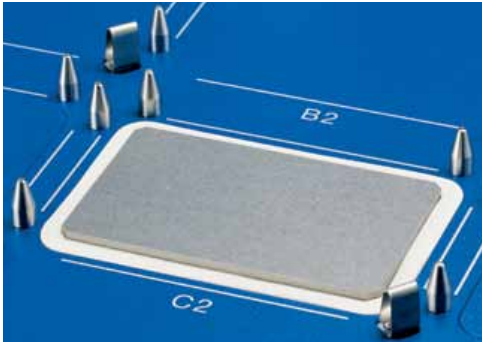
epServices include:

- > Cleaning, inspection and system maintenance
- > Eppendorf quality spare parts
- > Software update as needed
- > Instrument adjustments as needed
- > Functional tests with service diagnostic methods
- > Calibration of dispensing tools according to EN ISO 8655
- > Calibration of level sensor, carrier arm, thermal module and vacuum manifold
- > Operational Qualification certification
- > Full documentation and certificates
- > 1-year extended warranty



> Further information: www.eppendorfna.com/epServices

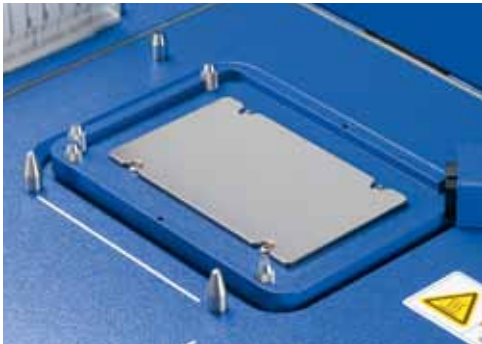
Factory-installed and Upgrade-Options



Thermal module

(Catalog No. 96002181)

- > Peltier powered thermal module for on deck incubations
- > Temperature range is 0°C–110°C
- > Available as upgrade for epMotion P5073 (1 per unit), 5075l (3 per unit), 5075t (2 per unit), 5075m (2 per unit), 5075v (3 per unit) and 5075vt (2 per unit)



ThermoMixer (TMX)

(Catalog No. 960021055)

- > Peltier powered module integrated into epMotion deck (5075t) for on deck incubations at temperature and vigorous 2-dimensional mixing
- > Temperature range 4°C–95°C
- > Mixing speed range 300–2,000 rpm
- > Available as upgrade for 5075l and 5075v



ThermoMixer with MagSep module

- > Peltier powered module integrated into epMotion deck (M5073 and 5075m) for on deck incubations at temperature and vigorous 2-dimensional mixing and magnetic separation
- > Temperature range 4°C–95°C
- > Mixing speed range 300–2,000 rpm
- > Compatible with 2 mL microcentrifuge tubes



Vacuum module (VAC)

(Catalog No. 960021011)

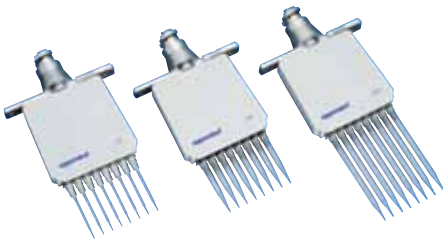
- > Adjustable vacuum manifold for fully automated handling of filter plates for nucleic acid isolation integrated into epMotion deck (5075v, 5075vt)
- > Multiple frames and spring construction makes it compatible with most filter plates
- > Suction range 0.1–0.85 ± 0.05 Pa
- > Available as upgrade for 5075l and 5075t

epMotion® Tools



Dispensing tools—Single-channel

- > High precision single-channel dispensing tools for delivery of volumes from 1–1,000 μL
- > Built in calibration sensor can detect when tool may need adjustment
 - 960001010 – Dispensing tool TS50, 1–50 μL
 - 960001028 – Dispensing tool TS300, 20–300 μL
 - 960001036 – Dispensing tool TS1000, 40–1,000 μL



Dispensing tools—Multichannel

- > High precision eight-channel dispensing tools for delivery of volumes from 1–1,000 μL to SBS format plates and tube strips up to 384 wells
- > Built in calibration sensor can detect when tool may need adjustment
 - 960001044 – Dispensing tool TM50, 1–50 μL
 - 960001052 – Dispensing tool TM300, 20–300 μL
 - 960001061 – Dispensing tool TM1000, 40–1,000 μL



Gripper tool

- > Tool allows for fully automated transport of tube racks, plates and accessories during an epMotion method
- > Tool automatically recognized and exchanged when needed
- > Available for P5073, M5073, 5075I, 5075t, 5075m and 5075v
 - 960002270 – Gripper

epMotion[®] Accessories



Reservoir rack

(Catalog No. 960002148)

- > Versatile rack for holding up to 7 bulk reagents in either 30 mL or 100 mL reservoirs or various tubes from 0.2 mL PCR tubes to 50 mL conical tubes
- > Temperature controlled possible when used in combination with a thermal module and Reservoir Rack Modules TC



Reagent reservoirs

- > Autoclavable reservoir for storing bulk reagents and accessible with multichannel tool
- > Their special geometry minimizes residual volume.
 - 960051009 – Reagent reservoir 30 mL, PCR clean, pk/50
 - 960051017 – Reagent reservoir 100 mL, PCR clean, pk/50



Reservoir Rack Module TC

- > For use in Reservoir racks and temperature controlled when used with a thermal module
- > 10 modules are available for tube volumes from 0.2 mL to 50 mL
 - 960002601 – for 8 x 0.2 mL PCR tubes
 - 960002611 – for 8 x 0.5 mL PCR tubes
 - 960002620 – for 4 x 1.5/2.0 mL tubes, incl. 0.5 mL tube sleeves
 - 960002630 – for 4 x Tubes 12 mm
 - 960002640 – for 4 x Tubes 16 mm
 - 5075799340 – for 4 x Eppendorf Tubes[®] 5.0 mL
 - 960002650 – for 4 x 15 mL conical tubes
 - 960002660 – for 2 x 50 mL conical tubes
 - 960002670 – for 1 x reservoir 30 mL
 - 960002680 – for 1 x reservoir 100 mL



Racks

- > 18 different racks available to allow for maximum versatility
- > No temperature control
 - 5075751453 – for 24 x 1.5/2.0 mL tubes, incl. 0.5 mL tube sleeves
 - 5075751275 – for 24 x 1.5/2.0 mL tubes
 - 960002318 – for 96 x 1.5/2.0 mL tubes (requires 2 deck positions)
 - 960002380 – for 24 x Tubes Ø 12 mm; H24 mm (e.g., HPLC vials)
 - 960002351 – for 24 x Tubes Ø 12 mm; H45 mm
 - 960002059 – for 24 x Tubes Ø 12 mm; H63 mm
 - 960002342 – for 24 x Tubes Ø 13 mm; H45 mm
 - 960002041 – for 24 x Tubes Ø 13 mm; H63 mm
 - 960002334 – for 24 x Tubes Ø 14 mm; H45 mm
 - 960002369 – for 24 x Tubes Ø 14 mm; H63 mm
 - 960002326 – for 24 x Tubes Ø 15 mm; H45 mm
 - 960002377 – for 24 x Tubes Ø 15 mm; H63 mm
 - 960002164 – for 24 x Tubes Ø 16 mm; H45 mm
 - 960002032 – for 24 x Tubes Ø 16 mm; H63 mm
 - 960002156 – for 24 x Tubes Ø 17 mm; H45 mm
 - 960002024 – for 24 x Tubes Ø 17 mm; H63 mm (e.g., 15 mL conical)
 - 960002520 – for 1 x SmartCycler® tube rack
 - 960002511 – for 96 x LightCycler® 20 µL/100 µL capillaries



Thermoracks/Thermoblocks

- > Allow for rapid temperature transfer when used in combination with an integrated thermal module
- > Thermoracks can be moved by the gripper
- > Available as TMX version optimized for high speed mixing with ThermoMixer (TMX)
 - 960002083 – for 1 x 96-well PCR plate
 - 960002091 – for 1 x 384-well PCR plate
 - 960002067 – for 24 x 1.5/2.0 mL tubes, incl. 0.5 mL tube sleeves
 - 960002070 – for 24 x 1.5/2.0 mL tubes, incl. 0.5 mL tube sleeves (TMX version)
 - 960002075 – for 24 x 1.5/2.0 mL tubes
 - 960002080 – for 24 x 1.5/2.0 mL tubes (TMX version)
 - 960002491 – for 24 x Cryotubes Ø 12.5 mm
 - 960002500 – for 384 x Corbett® 0.1 mL strip-tubes



Thermoadapter

- > Allow for rapid temperature transfer when used in combination with an integrated thermal module
- > Plates can be added/removed from the Thermoadapters by the gripper
 - 960002199 – for 1 x 96-well PCR plate
 - 960002202 – for 1 x 384-well PCR plate
 - 960002391 – for 1 x Eppendorf Deepwell Plate 96/1,000
 - 5075751305 – for 1 x MagNA Pure® sample cartridge

Technical Specifications

Surface of systems		5070	5073	5075
	Width	39 in/98 cm	39 in/98 cm	56 in/140 cm
	Depth	24 in/62 cm	30 in/75 cm	30 in/75 cm
Dimensions of device		5070	5073	5075
	Width	26 in/65 cm	26 in/65 cm	43 in/107 cm
	Depth	19 in/48 cm	24 in/61 cm	24 in/61 cm
	Height	25 in/63 cm	27 in/67 cm	27 in/67 cm
CleanCap extra	Height	n.a.	4 in/10 cm	4 in/10 cm

Weight (without packaging and accessories)

5070	45 kg	99.2 lb	5075l	85 kg	187.4 lb
5070 CB	45 kg	99.2 lb	5075t	87 kg	191.8 lb
P5073	50 kg	110 lb	5075v	86 kg	189.6 lb
M5073	57 kg	125.7 lb	5075vt	90 kg	198.4 lb
			5075m	88 kg	194 lb
CleanCap (5073)	5 kg	11 lb	CleanCap (5075)	10 kg	22.1 lb

Power supply	5070	5073	5075
Voltage	100–240 V $\pm 10\%$	100–240 V $\pm 10\%$	100–240 V $\pm 10\%$
Frequency	50–60 Hz $\pm 5\%$	50–60 Hz $\pm 5\%$	50–60 Hz $\pm 5\%$
Standby	50 W	50 W	50 W
Max output	80 W	600 W	700 W

Pipetting performance specifications measured according ISO 8655

Single-channel tool	Volume	Systematic measurement error	Random measurement error
TS 50	50 μL	$\pm 1.2\%$	$\pm 0.4\%$
	1 μL	$\pm 15\%$	$\pm 5\%$
TS 300	300 μL	$\pm 0.6\%$	$\pm 0.3\%$
	20 μL	$\pm 4\%$	$\pm 2.5\%$
TS 1000	1,000 μL	$\pm 0.7\%$	$\pm 0.15\%$
	40 μL	$\pm 5\%$	$\pm 1.5\%$

in pipetting mode, free jet, without pre-wetting, with distilled water, at 20°C

Typical pipetting performance (MVS data for epMotion 5070)*

Single-channel tool	Volume	Systematic measurement error	Random measurement error
TS 50	50 μL	$\pm 0.6\%$	$\pm 0.1\%$
	1 μL	$\pm 5.4\%$	$\pm 1.6\%$
TS 300	300 μL	$\pm 0.7\%$	$\pm 0.13\%$
	20 μL	$\pm 0.9\%$	$\pm 0.2\%$
TS 1000	200 μL	$\pm 1.4\%$	$\pm 0.1\%$
	40 μL	$\pm 0.8\%$	$\pm 0.2\%$

* Eppendorf application Note 168: »Evaluation of the Eppendorf epMotion Pipetting Tools using the Artel MVS«

Conductor	Systematic measurement error	Random measurement error
X, Y, Z Positioning:	± 0.3 mm	± 0.1 mm
Detector		
Optical confocal infrared detector	contact-free detection of liquid levels, tools used, labware worktables, tip types and quantities	
Optical sensor	liquid surface must be $90 \pm 3^\circ$ to the vertical plane of the optical sensor	
Gripper		
Carrying capacity	1200 g	
Vacuum unit		
Max output	35 NI/min	
Suction range	0.1–85 kPa	
Suction time	1 sec to 36 min	
ThermoMixer		
Mixing frequency	Off, 300–2000 rpm, optimized for labware and application	
Mixing amplitude	3 mm	
Temperature range	–15°C below RT to 95°C measured in labware at 75 % filling height	
Temperature homogeneity	≤ 10 % on the block	
Heating rate	5°C/min, on the block	
Cooling rate	3°C/min, on the block, above RT	
Setting range time	5 sec–120 min	
Optional thermal module		
Setting range time	1 min–120 min	
Setting range temperature	0°C–110°C (32°F–230°F)	
CleanCap		
HEPA filter	70–80 m ³ /h; class E10	
UV light	254 nm (UV-C)	
UV lamp power 1m distance	39 μ W/cm ²	

Ordering Information

epMotion® Systems

Ordering information

Description	Catalog No.
epMotion 5070 , with control panel, incl. control panel, mouse, software, waste box, MMC, and reader, 100–240 V; 50/60 Hz	960000005
epMotion 5070 PC version , same as 5070 catalog no. 960000005 but with integrated industrial PC, keyboard, and mouse instead of control panel. Includes monitor and epBlue software.	960000111
epMotion 5070 CB , with control panel, epMotion to be operated inside closed containers, incl. control panel, mouse, software, waste box, MMC, and reader, 100–240 V; 50/60 Hz	960000021
epMotion 5070 CB PC version , same as 5070 catalog no. 960000021 but with integrated industrial PC, keyboard, and mouse instead of control panel. Software and monitor included.	960000222
epMotion P5073 , for automatic preparation of PCR reactions, 100–240 V; 50/60 Hz, with EasyCon tablet, epBlue software with PCR Assistant, TS 50, TS 300, thermoblock, 24 x 1.5 mL rack (no temperature control)	507300000
epMotion P5073c , for automatic preparation of PCR reactions, 100–240 V; 50/60 Hz, with CleanCap, EasyCon tablet, epBlue software with PCR Assistant, TS 50, TS 300, thermoblock, 24 x 1.5 mL rack (no temperature control)	5073000302
epMotion M5073 , for automated nucleic acid preparation from 1–24 samples with Eppendorf MagSep kits, 100–240 V/50–60 Hz, with EasyCon tablet, epBlue software with Prep Assistant, TS 50, TS 1000, PrepRack, ReagentRack, 24 x 1.5 mL rack (no temperature control)	5073000205
epMotion M5073c , for automated nucleic acid preparation from 1–24 samples with Eppendorf MagSep kits, 100–240 V/50–60 Hz, with CleanCap, EasyCon tablet, epBlue software with Prep Assistant, TS 50, TS 1000, PrepRack, ReagentRack, 24 x 1.5 mL rack (no temperature control)	5073000400
epMotion 5075I , incl. epBlue software and LH assistant, mouse, waste box, 100–240 V; 50/60 Hz, and MultiCon all-in-one PC	5075006018
epMotion 5075Ic , incl. epBlue software and LH assistant, mouse, waste box, 100–240 V; 50/60 Hz, with CleanCap, and MultiCon all-in-one PC	5075006019
epMotion 5075v , incl. vacuum system, gripper, vac frame 2, vac frame holder, epBlue software, mouse, waste box, 100–240 V; 50/60 Hz, and MultiCon all-in-one PC	5075006020
epMotion 5075vc , incl. vacuum system, gripper, vac frame 2, vac frame holder, epBlue software, mouse, waste box, 100–240 V; 50/60 Hz, with CleanCap, and MultiCon all-in-one PC	5075006021
epMotion 5075t , incl. ThermoMixer, epBlue software, mouse, waste box, 100–240 V; 50/60 Hz, and MultiCon all-in-one PC	5075006022
epMotion 5075tc , incl. ThermoMixer, epBlue software, mouse, waste box, 100–240 V; 50/60 Hz, with CleanCap, and MultiCon all-in-one PC	5075006023
epMotion 5075vt , incl. vacuum system, gripper, vac frame 2, vac frame holder, epBlue software, mouse, waste box, 100–240 V, 50/60 Hz, and MultiCon all-in-one PC	5075006035
epMotion 5075vtc , incl. vacuum system, gripper, vac frame 2, vac frame holder, epBlue software, mouse, waste box, 100–240 V; 50/60 Hz, with CleanCap, and MultiCon all-in-one PC	5075006034
epMotion 5075m , incl. MagSep module, ThermoMixer, epBlue software and Prep & assistant, mouse, waste box, 100–240 V; 50/60 Hz, and MultiCon all-in-one PC	5075006024
epMotion 5075mc , incl. MagSep module, ThermoMixer, epBlue software and Prep & assistant, mouse, waste box, 100–240 V; 50/60 Hz, with CleanCap, and MultiCon all-in-one PC	5075006025

Consumables

Ordering information

Description	Catalog No.
epT.I.P.S. non-filter	
Eppendorf Quality™, 50 µL, 960 tips (10 racks x 96 tips)	0030014405
Eppendorf Quality, 300 µL, 960 tips (10 racks x 96 tips)	0030014448
Eppendorf Quality, 1,000 µL, 960 tips (10 racks x 96 tips)	0030014480
Sterile, 50 µL, 960 tips (10 racks x 96 tips)	0030015207
Sterile, 300 µL, 960 tips (10 racks x 96 tips)	0030015223
Sterile, 1,000 µL, 960 tips (10 racks x 96 tips)	0030015240
epT.I.P.S. Motion, with filter	
PCR clean, 50 µL, 960 tips (10 racks x 96 tips)	0030014413
PCR clean, 300 µL, 960 tips (10 racks x 96 tips)	0030014456
PCR clean, 1,000 µL, 960 tips (10 racks x 96 tips)	0030014499
PCR clean and sterile, 50 µL, 960 tips (10 racks x 96 tips)	0030015215
PCR clean and sterile, 300 µL, 960 tips (10 racks x 96 tips)	0030015231
PCR clean and sterile, 1,000 µL, 960 tips (10 racks x 96 tips)	0030015258
epT.I.P.S. Motion SafeRack (optimized for reuse tip function)	
Eppendorf Quality, 50 µL, 960 tips (10 racks x 96 tips)	0030014600
Eppendorf Quality, 1,000 µL, 960 tips (10 racks x 96 tips)	0030014642
epT.I.P.S. Motion SafeRack, with filter (optimized for reuse tip function)	
PCR clean, 50 µL, 960 tips (10 racks x 96 tips)	0030014618
PCR clean, 1,000 µL, 960 tips (10 racks x 96 tips)	0030014650
epT.I.P.S. Motion as reload system	
Eppendorf Quality, 50 µL, 2,304 tips (24 trays x 96 tips)	0030014421
Eppendorf Quality, 300 µL, 2,304 tips (24 trays x 96 tips)	0030014464
Eppendorf Quality, 1,000 µL, 2,304 tips (24 trays x 96 tips)	0030014502
epT.I.P.S. Motion as reload system, with filter	
PCR clean, 50 µL, 2,304 tips (24 trays x 96 tips)	0030014430
PCR clean, 300 µL, 2,304 tips (24 trays x 96 tips)	0030014472
PCR clean, 1,000 µL, 2,304 tips (24 trays x 96 tips)	0030014510
TipHolder, for epT.I.P.S. Motion Reloads	
	5075751399
Reservoir 30 mL , large-volume container for reagent presentation on the epMotion, can only be inserted with the Reservoir Rack; production batch testing, certified 30 mL, 10 x 5 reservoirs in the bag, PCR clean, polypropylene	960051009
Reservoir 100 mL , large-volume container for reagent presentation on the epMotion, can only be inserted with the Reservoir Rack; production batch testing, certified 100 mL, 10 x 5 reservoirs in the bag, PCR clean, polypropylene	960051017
Reservoir 400 mL , large-volume container in SBS format for reagent presentation on the epMotion; production batch testing, certified 400 mL, 10 reservoirs, autoclavable, polypropylene	5075751364
MagSep Tissue gDNA Kit , reagent kit for genomic DNA purification of 4 x 24 samples from cells & tissues	0030450000
MagSep Blood gDNA Kit , reagent kit for genomic DNA purification of 4 x 24 samples from blood	0030451007
MagSep Viral DNA/RNA Kit , reagent kit for viral DNA/RNA purification of 4 x 24 samples	0030452003

epMotion® Tools and Accessories

Ordering information

Description	Catalog No.
TS 50 single-channel dispensing tool , 1–50 µL volume range	960001010
TS 300 single-channel dispensing tool , 20–300 µL volume range	960001028
TS 1000 single-channel dispensing tool , 40–1,000 µL volume range	960001036
TM 50-8 eight-channel dispensing tool , 1–50 µL volume range	960001044
TM 300-8 eight-channel dispensing tool , 20–300 µL volume range	960001052
TM 1000-8 eight-channel dispensing tool , 40–1,000 µL volume range	960001061
Holder for 6 dispensing tools	960001109
Gripper , incl. holder, for transporting plates on the worktable and automatic operation of the vacuum manifold	960002270
Holder for gripper	960002211
Waste container with lid , for holding used pipette tips	960002016
Liquid Waste Tub, incl. lid , with working volume of 175 mL for mounting in waste box for use with 5073 and 5075	5075751500
Monitor , 22" TFT widescreen monitor for use with epMotion versions with integrated PC	960021044
MultiMediaCard , for archiving parameters and transporting data between the control panel and PC, not for Eppendorf EasyCon control panel	960002008
Thermal module (Upgrade kit) , thermal module for heating or cooling thermo adapters, thermoblock and thermoracks. Requires installation by Eppendorf service technician, extra cost applies.	960002181
ThermoMixer TMX module (Upgrade kit) , for heating, cooling and mixing of tubes and plates. Requires installation by Eppendorf service technician, extra cost applies.	960021055
Vacuum module (Upgrade kit) . Must include extension plate when being added to epMotion 5075t. Requires installation by Eppendorf service technician, extra cost applies.	960021011
Accessories for use with vacuum module (VAC)	
Holder for Vac Frame	960002237
Vacuum lid	960002245
Mat for vacuum lid	960002407
Vac Frame 1	960002253
Vac Frame 2	960002261
Elution plate adapter, for processing micro tubes in racks	960002531
Elution plate adapter, type for VAC station	960002571
Anticontamination plate adapter, for vacuum processes with foaming solutions in multiwell plates	960002540
Vac Thermo lid	960002551
Height adapter , for leveling labware, enables faster plate processing	
40 mm	960002121
55 mm	960002113
85 mm	960002105

epMotion® Accessories

Ordering information

Description	Catalog No.
Racks for single test tubes , no temperature control	
for 24 x Eppendorf Safe-Lock tubes 1.5/2.0 mL	5075751275
for 24 x Eppendorf Safe-Lock tubes 1.5/2.0 mL, incl. 0.5 mL tube sleeves	5075751453
for 96 x 1.5/2.0 mL screw cap tubes (requires 2 deck positions)	960002318
for 24 x tubes Ø 12 mm; H24 mm (e.g., HPLC vials)	960002380
for 24 x tubes Ø 12 mm; H45 mm	960002351
for 24 x tubes Ø 12 mm; H63 mm	960002059
for 24 x tubes Ø 13 mm; H45 mm	960002342
for 24 x tubes Ø 13 mm; H63 mm	960002041
for 24 x tubes Ø 14 mm; H45 mm	960002334
for 24 x tubes Ø 14 mm; H63 mm	960002369
for 24 x tubes Ø 15 mm; H45 mm	960002326
for 24 x tubes Ø 15 mm; H63 mm	960002377
for 24 x tubes Ø 16 mm; H45 mm	960002164
for 24 x tubes Ø 16 mm; H63 mm	960002032
for 24 x tubes Ø 17 mm; H45 mm	960002156
for 24 x tubes Ø 17 mm; H63 mm (e.g., 15 mL conical tubes)	960002024
Rack Smart, for 1 x SmartCycler reaction tube rack	960002520
Rack LC, for 96 x 20 µL or 100 µL LightCycler® capillaries. Also suitable for use with Centrifuge 5804/5804 R or 5810/5810 R, set of 2.	960002511
PrepRack, for 24 x Eppendorf Safe-Lock tubes 1.5/2.0 mL, for magnetic separation in 1.5/2.0 mL tubes using the MagSep module of epMotion M5073 or 5075m	5073751006
ReagentRack to hold the reagent tray, for MagSep reagent kits	5075751429
Thermoblock/Thermorack , for temperature control of plates, plates are transported with thermoblock/thermorack	
for 1 x PCR plate, 96-well, or 96 x 0.2 mL PCR tubes	960002083
for 1 x PCR plate, 384-well	960002091
for 24 x Eppendorf Safe-Lock tubes, 1.5/2.0 mL	960002075
for 24 x Eppendorf Safe-Lock tubes, 1.5/2.0 mL, incl. 0.5 mL tube sleeves	960002067
for 24 x Eppendorf Safe-Lock tubes, 1.5/2.0 mL (TMX version)	960002080
for 24 x Eppendorf Safe-Lock tubes, 1.5/2.0 mL, incl. 0.5 mL tube sleeves (TMX version)	960002070
for 24 x Cryotubes®	960002491
Thermoadapter , for temperature control of plates, plates can be removed by the gripper	
for 1 x PCR plate, 96-well, skirted	960002199
for 1 x PCR plate, 384-well, skirted	960002202
for 384 x 0.1 mL strip tubes in the Corbett Research Rotor-Gene™ 3000	960002500
for 1 x DWP 96, for Deepwell Plates 96/1,000 µL	960002391
for 1 x MagNA Pure LC sample cartridge	5075751305
Thermoadapter Frosty , combination of height adapter and PCR-Cooler, for cooling 1 x PCR plate, 96-well, skirted	960002300

Ordering information

Description	Catalog No.
Reservoir Rack , holds up to 7 reservoirs (30 mL and 100 mL) or Reservoir Rack TC modules	960002148
Reservoir Rack Temperature Control (TC) Modules , for use in ep <i>Motion</i> Reservoir Rack	
for 8 x PCR tubes 0.2 mL	960002601
for 8 x PCR tubes 0.5 mL	960002067
for 4 x Eppendorf Safe-Lock tubes 1.5/2.0 mL, incl. 0.5 mL tube sleeves	5075799081
for 4 x Eppendorf Tubes 5.0 mL	5075799340
for 4 x reaction vessels Ø 12 mm	960002630
for 4 x reaction vessels Ø 16 mm	960002640
for 4 x reaction vessels Ø 17 mm (e.g. 15 mL conical)	960002650
for 2 x reaction vessels Ø 29 mm (e.g. 50 mL conical)	960002660
for 1 x reservoir 30 mL	960002670
for 1 x reservoir 100 mL	960002680
Adapter sleeves , to retrofit the 1.5/2.0 mL thermoracks for use with 0.5 mL vessels	
1 set of 25 pieces	960002172

Software

Ordering information

Description	Catalog No.
epBlue ID software and hardware modification kit , for 5070 and 5075 PC versions, barcode support includes software, barcode reader and stand, compatible with all ep <i>Motion</i> PC versions except ep <i>Motion</i> 5075 MC PC version, not compatible with the ep <i>Motion</i> operator panel versions	5075000830
epBlue GxP software modification kit , for use in regulated process environments (according to GLP, GMP, 21 CFR), for pre-installed ep <i>Motion</i> PC versions, with epBlue GxP software, corresponding firmware, USB hardware key, certificates. Requires 627B version of integrated PC	5075000849
ep<i>Motion</i> Editor , incl. editor key, software package for creating and editing applications on a PC and transferring to a Control Panel	960000269
ep<i>Motion</i> Editor, additional license , incl. editor key, software package for creating and editing applications on a PC and transferring to a Control Panel	960000300

Eppendorf North America, Inc.
 Phone: 800-645-3050
 Email: info@eppendorf.com
 Eppendorf Canada Ltd.
 Phone: 800-263-8715
 Email: canada@eppendorf.com

www.eppendorfna.com/automation

Only for ep*Motion* M5073, M5073c and 5075m: Limited Use Label License

Notice to purchaser; limited license for research use only This product and its use may be covered by one or more patents owned by Gen-Probe Incorporated. The purchase price for this product includes only limited, nontransferable rights under certain claims of certain patents owned by Gen-Probe Incorporated to use this product for research purposes only. No other rights are conveyed. Purchaser is not granted any rights under patents of Gen-Probe Incorporated to use this product for any commercial use. Further information regarding purchasing a license under patents of Gen-Probe Incorporated to use this product for any other purposes, including, without limitation, for commercial use, may be obtained by contacting Gen-Probe Incorporated, Attn: Business Development Department, 10210 Genetic Center Drive, San Diego, California 92121-4362, U.S.A.

031.C1.0141.A.US.14 © 2014 Eppendorf AG. Eppendorf®, the Eppendorf logo, Eppendorf Tubes®, ep*Motion*®, epT.I.P.S.® and ThermoMixer® are registered trademarks of Eppendorf AG. epBlue™, Eppendorf EasyCon™, Eppendorf MultiCon™, Eppendorf Quality™, Eppendorf MagSep™ and epServices Logo™ are a trademark of Eppendorf AG. Cryotubes® is a registered trademark of Vanguard International, Inc. LightCycler® is a registered trademark of Roche Diagnostics GmbH Limited. MVS® is a registered trademark of Artel. MagNa pure® is a registered trademark of Roche. SmartCycler® is a registered trademark of Cepheid Corporation. Product appearance, specifications, and/or prices are subject to change without notice.