

2016 CALENDAR

# The Beauty Within

ART IN MICROSCOPY

# Microscopy Reagents For Immunofluorescence

BioLegend is proud to support a variety of reagents for microscopy imaging of cells and tissue samples.

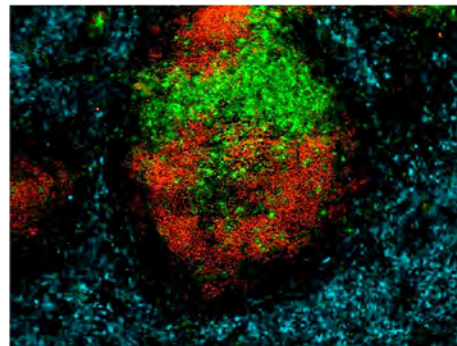
**Cover Image:** Mouse small intestine stained with rat anti-Ki-67 (clone 11F6) followed by Alexa Fluor® 647 anti-rat IgG (Poly4054) (Red), Alexa Fluor® 488 anti-CD324 (E-Cadherin) (clone DECMA-1) (Green), and DAPI (Blue).

January, May, August, and November images are courtesy of Molecular Expressions.

## Brilliant Violet 421™

Brilliant Violet 421™ (BV421™) allows for expanded options in multicolor microscopy. BV421™ is used in the “blue” channel, which is typically occupied by DAPI or Alexa Fluor® 405.

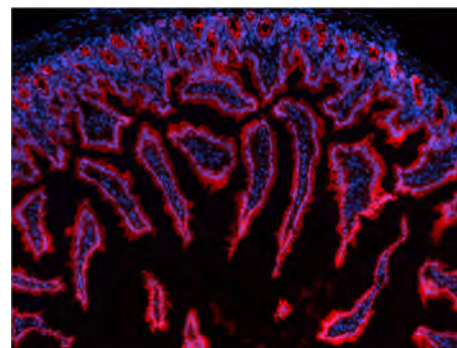
C57BL/6 mouse frozen lymph node section was stained with anti-mouse CD206 (clone C068C2) BV421™ (blue), CD3 (clone 145-2C11) Alexa Fluor® 647 (green) and B220 (clone RA3-6B2) Alexa Fluor® 594 (red).



## Alexa Fluor® 488, Alexa Fluor® 594, and Alexa Fluor® 647

Alexa Fluor® 488 , Alexa Fluor® 594 , and Alexa Fluor® 647 are popular fluors that provide strong signal and are photostable for imaging.

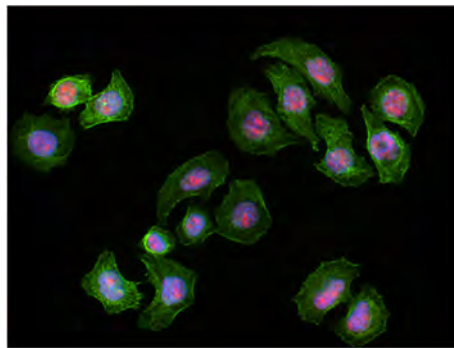
C57BL/6 mouse frozen intestine section was stained with anti-mouse CD324 (clone DECMA-1) Alexa Fluor® 594 (red). Nuclei were counterstained with DAPI (blue).



## Secondary Reagents

Amplification is often required in imaging applications. One way to increase the likelihood of success when imaging a target is to amplify the primary intended signal without raising the background signal.

HeLa cells were intracellularly stained with purified PARP (clone 5A5) (red) followed by anti-mouse IgG-DyLight™ 594 and Alexa Fluor® 488 Phalloidin (green) staining. Nuclei were counterstained with DAPI (blue).

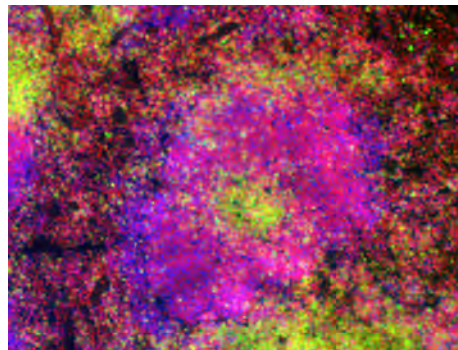


## Cell Tracking Dyes, Nuclear Counterstains, and More...

**Our diverse portfolio of microscopy products includes:**

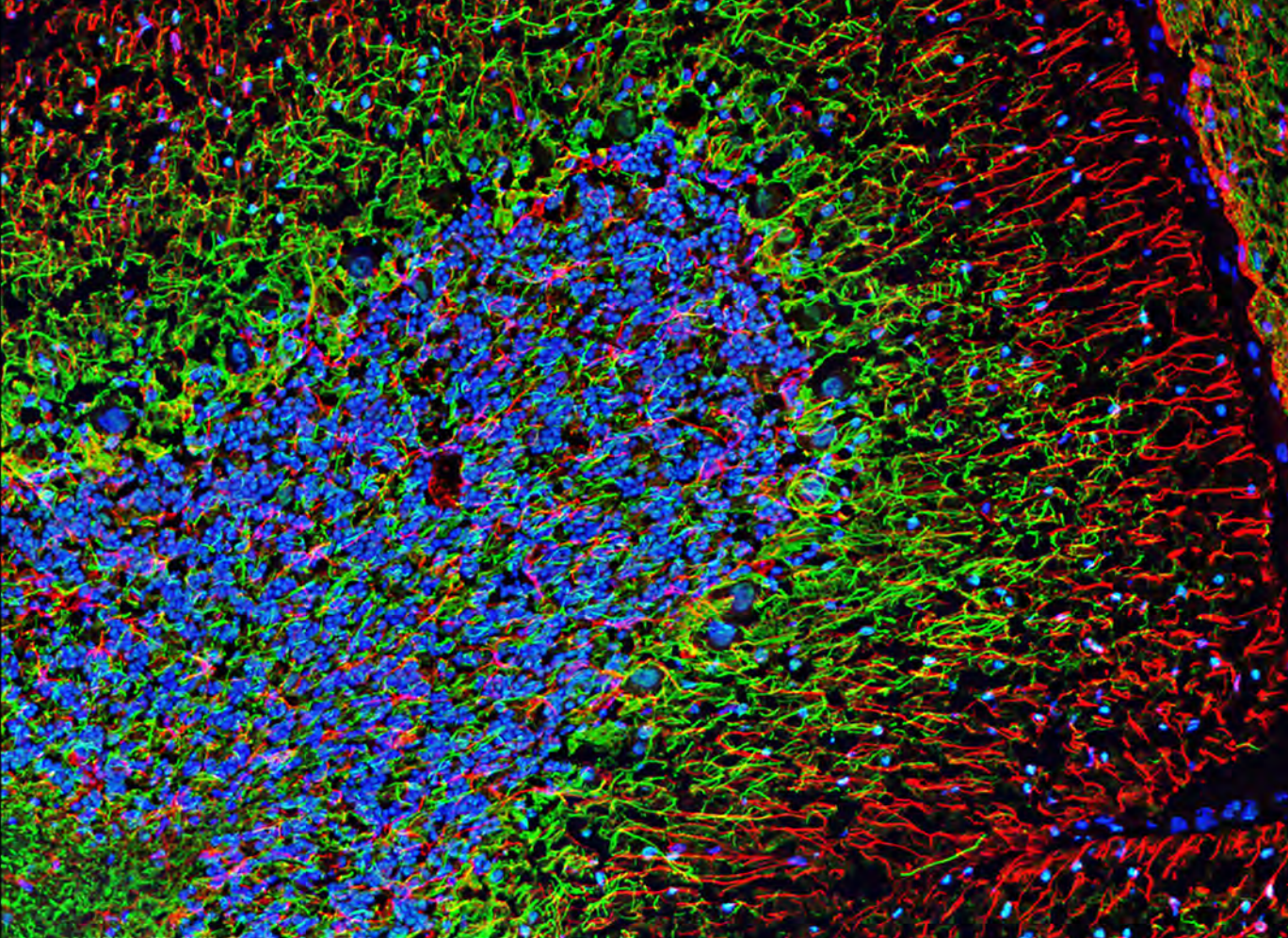
- CFSE: a classical, cell-permeant long-term tracking dye.
- Zombie Dyes: binds to all cells due to the presence of cell surface amines, offering long-term cell tracking without intracellular delivery.
- DAPI and DRAQ5™: nuclear counterstains.
- Anti-Ki-67 antibodies: available in several fluorophore conjugates, allowing you to identify proliferating cells.

C57BL/6 mouse frozen spleen section was stained with anti-mouse CD3 (clone 17A2) Alexa Fluor® 647 (green) and B220 (clone RA3-6B2) BV421™ (blue). Nuclei were counterstained with DRAQ5™ (red).



Learn more at:  
[biolegend.com/microscopy](https://www.biolegend.com/microscopy)

Brilliant Violet™ is a trademark of Sirigen Group Ltd. DyLight™ is a trademark of Thermo Fisher Scientific Inc. and its subsidiaries. Alexa Fluor™ is a registered trademark of Life Technologies Corporation. DRAQ5™ is a trademark of Biostatus Limited.



# JANUARY 2016

Rat brain sagittal 8  $\mu$ m section stained with Alexa Fluor® 568 anti-GFAP (Red), Alexa Fluor® 488 anti-NFP (Green), and Hoechst 33342 (Blue).

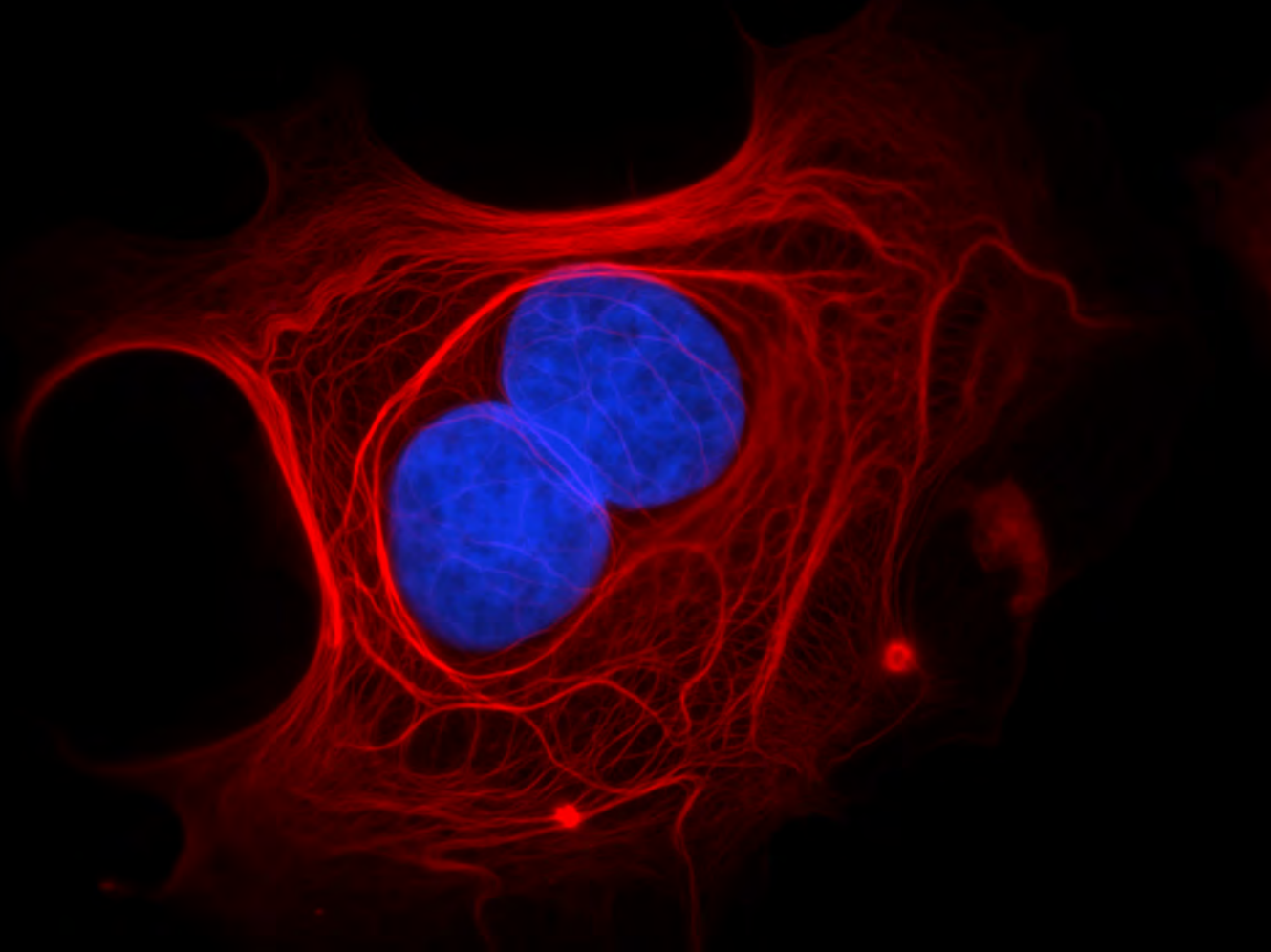
Sunday	Monday	Tuesday	Wednesday	Thursday	Friday	Saturday
					1 New Year's Day	2
3	4	5	6	7	8	9
10	11	12	13	14	15	16
17	18	19	20	21	22	23
24/31	25	26	27	28	29	30



Toll-Free Tel: (US & Canada): 1.877.BIOLEGEND (246.5343)

Tel: 858.768.5800

[biolegend.com](http://biolegend.com)



# FEBRUARY 2016

MCF7 cells stained with Alexa Fluor® 594 anti-Cytokeratin 19  
(clone A53-B/A2) (Red) and DAPI (Blue).

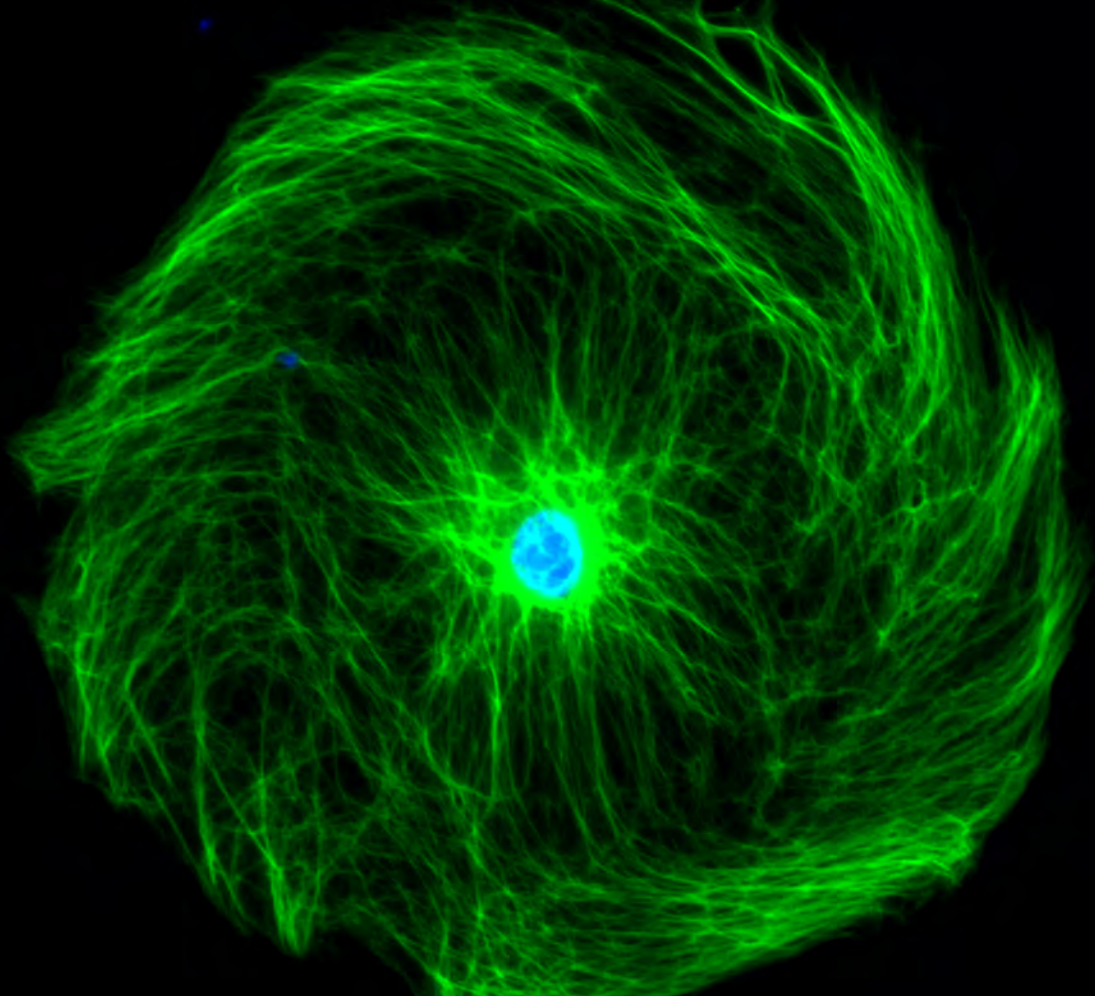
Sunday	Monday	Tuesday	Wednesday	Thursday	Friday	Saturday
	1	2	3	4	5	6
7	8	9	10	11	12	13
14	15	16	17	18	19	20
21	22	23	24	25	26	27
28	29					



Toll-Free Tel: (US & Canada): 1.877.BIOLEGEND (246.5343)

Tel: 858.768.5800

[biolegend.com](http://biolegend.com)





# MARCH 2016

Cultured mouse brain cells stained with Alexa Fluor® 488 anti-GFAP  
(clone 2E1.E9) (Green) and DAPI (Blue).

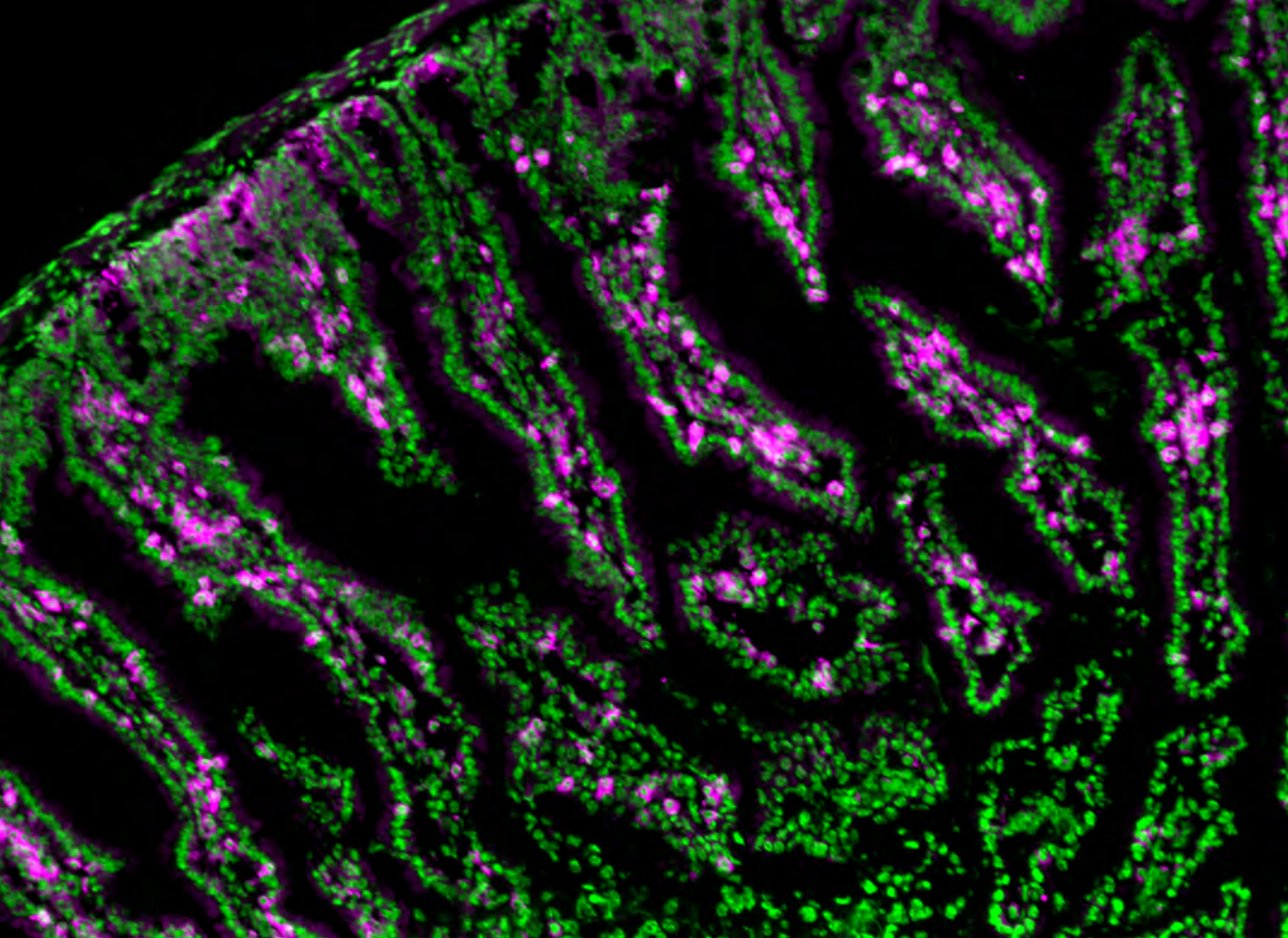
Sunday	Monday	Tuesday	Wednesday	Thursday	Friday	Saturday
		1	2	3	4	5
6	7	8	9	10	11	12
13	14	15	WIRM X 16 Davos, Switzerland (until 3/19)	17	18	19
20 First Day of Spring	21	22	23	24	25	26
27 Easter	28	29	30	31		



Toll-Free Tel: (US & Canada): 1.877.BIOLEGEND (246.5343)

Tel: 858.768.5800

[biolegend.com](http://biolegend.com)



# APRIL 2016

Mouse small intestine stained with Alexa Fluor® 594 anti-CD103 (clone 2E7) (Magenta) and DAPI (Green).

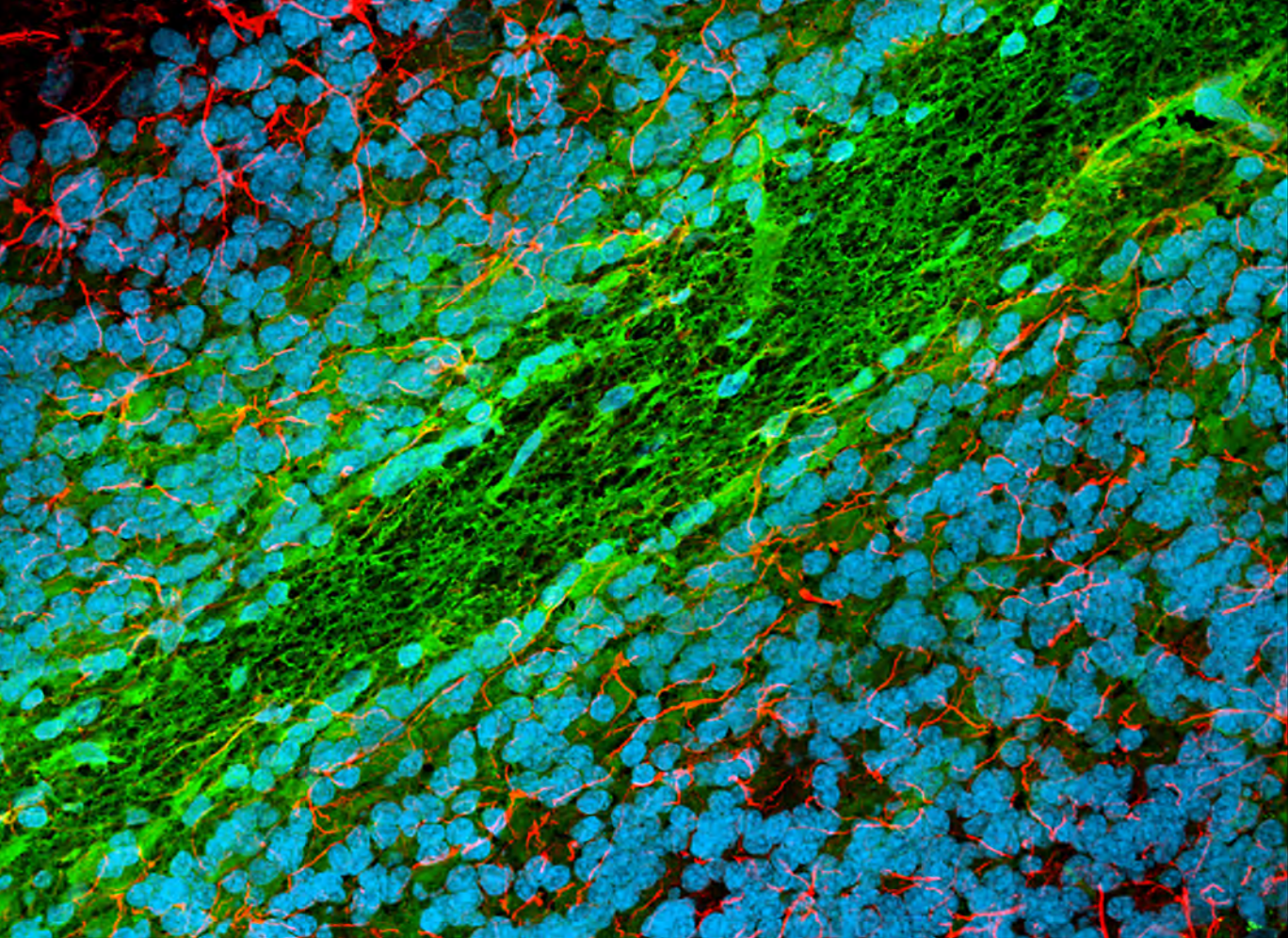
Sunday	Monday	Tuesday	Wednesday	Thursday	Friday	Saturday
					1 Canadian Society for Immunology Ottawa, ON (until 4/4)	2
3	4	5	6	7	8	9
10	11	12	13	14	15	16 AACR 2016 New Orleans, LA (until 4/20)
17	18	19	20	21	22	23
24	25	26	27	28	29	30



Toll-Free Tel: (US & Canada): 1.877.BIOLEGEND (246.5343)

Tel: 858.768.5800

[biolegend.com](http://biolegend.com)



# MAY 2016

Rat brain sagittal 8  $\mu$ m section stained with Alexa Fluor<sup>®</sup> 568 anti-GFAP (Red), Alexa Fluor<sup>®</sup> 488 anti-Myelin BP (Green), and Hoechst 33342 (Blue).

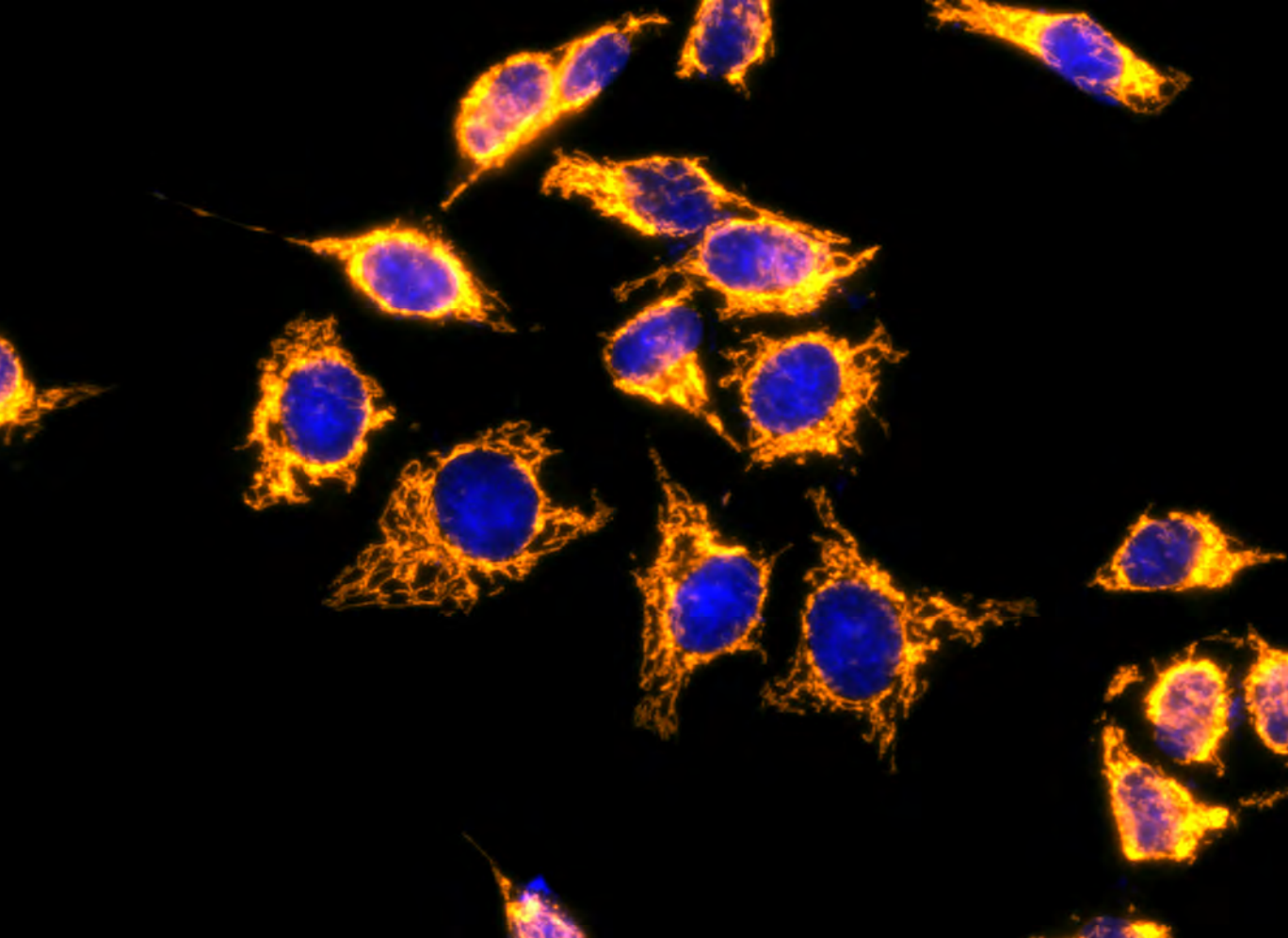
Sunday	Monday	Tuesday	Wednesday	Thursday	Friday	Saturday
1	2	3	4	5	6	7
8	9	10	11	12	13 IMMUNOLOGY 2016™ Seattle, WA (until 5/17)	14
15	16	17	18	19	20	21
22	23	24	25	26	27	28
29	30	31				



Toll-Free Tel: (US & Canada): 1.877.BIOLEGEND (246.5343)

Tel: 858.768.5800

[biolegend.com](http://biolegend.com)



# JUNE 2016

HeLa cells stained with Alexa Fluor® 594 anti-Cytochrome C  
(clone 6H2.B4) (Red), MitoSpy™ Orange (Yellow), and DAPI (Blue).

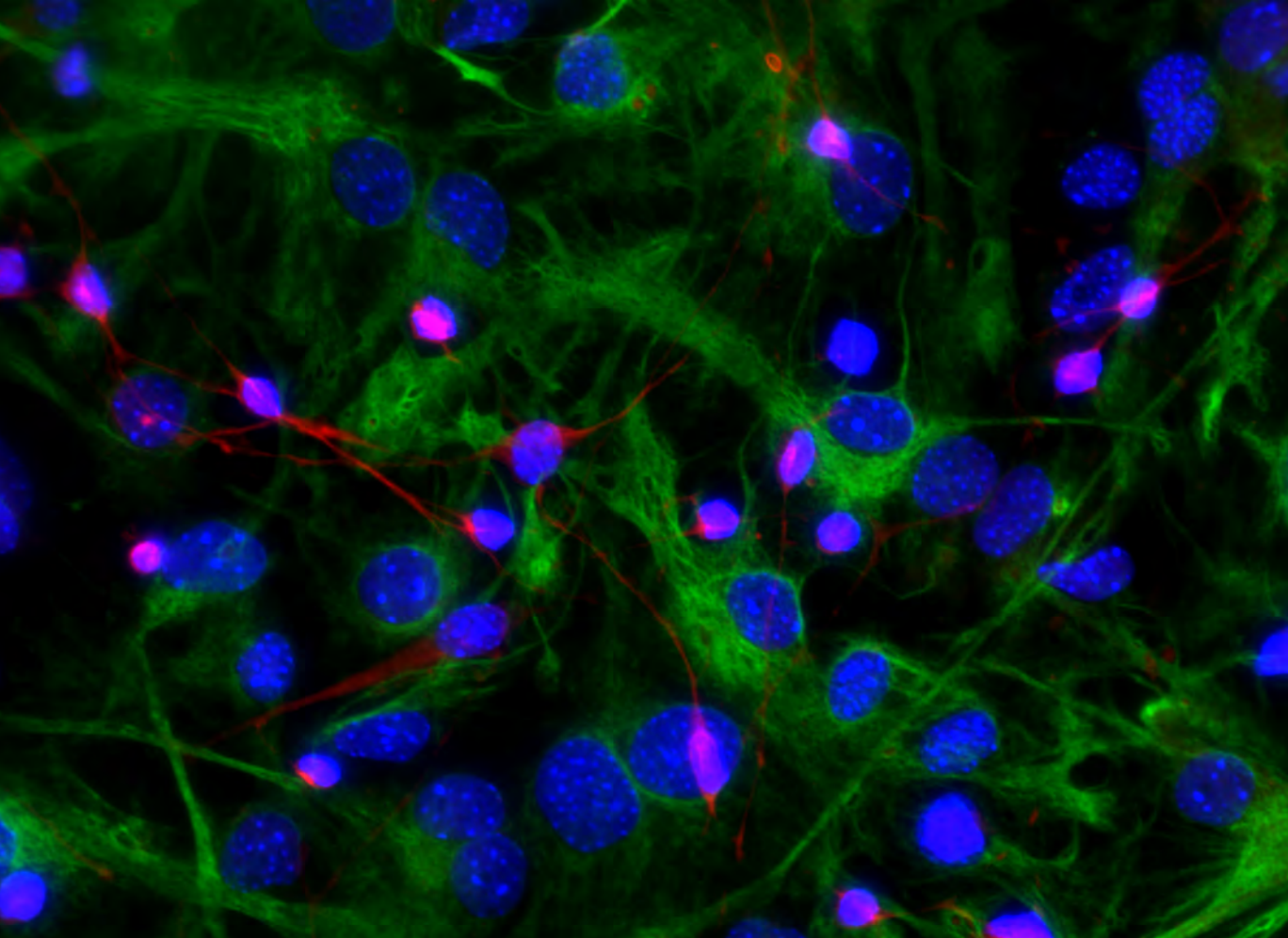
Sunday	Monday	Tuesday	Wednesday	Thursday	Friday	Saturday
			1	2	3	4
5	6	7	8	9	10	11 CYTO 2016 Seattle, WA (until 6/15)
12	13	14	15	16	17	18
19	20 First Day of Summer	21	22 FOCIS 2016 Boston, MA ISSCR 2016 San Francisco, CA (both until 6/25)	23	24	25
26	27	28	29	30		



Toll-Free Tel: (US & Canada): 1.877.BIOLEGEND (246.5343)

Tel: 858.768.5800

[biolegend.com](http://biolegend.com)





# JULY 2016

Cultured mouse brain cells stained with Alexa Fluor® 594 anti-Tubulin beta 3 (TUBB3) (clone AA10) (Red), mouse anti-GFAP (clone 2E1.E9) followed by Alexa Fluor® 647 anti-mouse IgG (Poly4053) (Green), and DAPI (Blue).

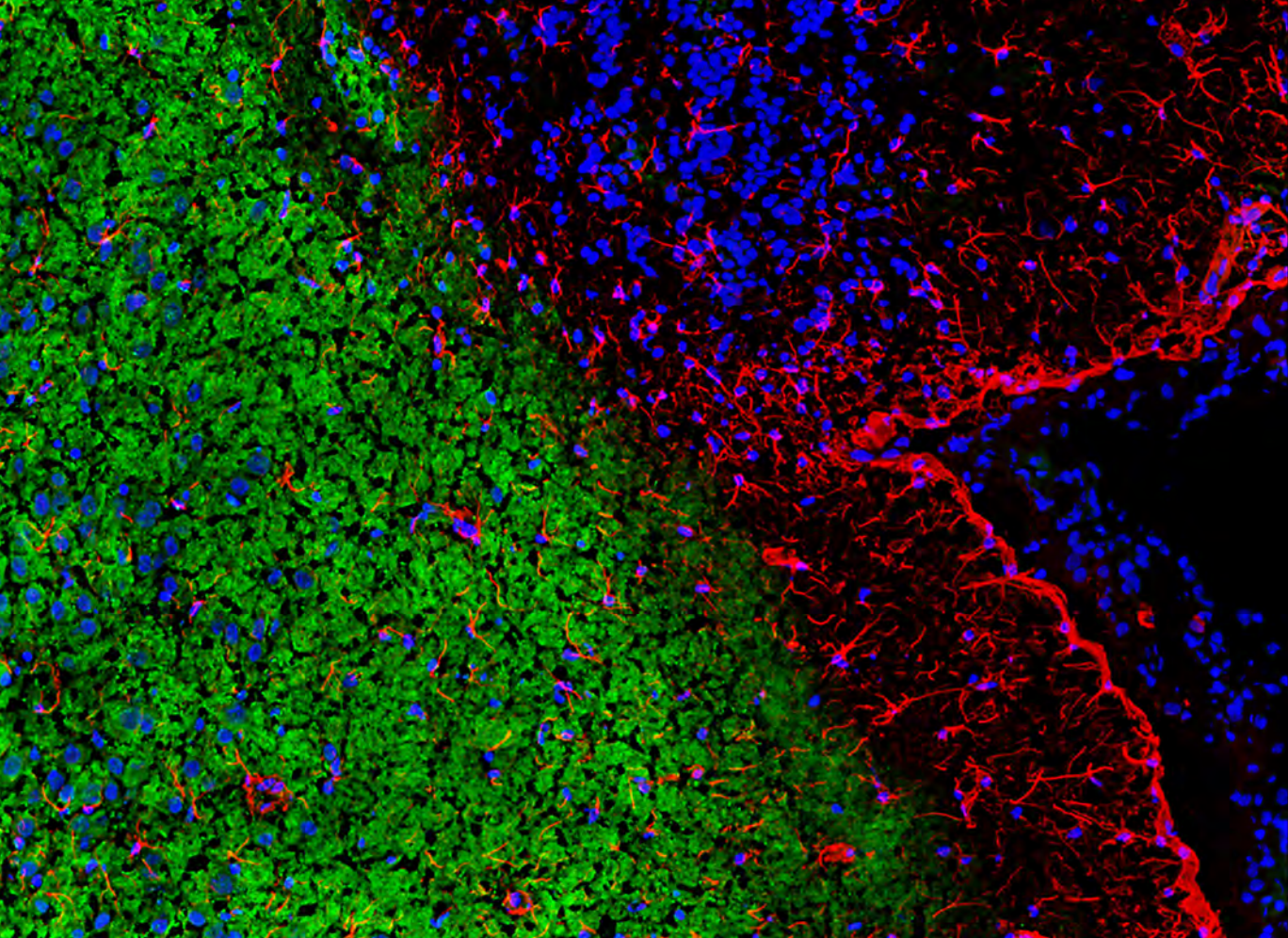
Sunday	Monday	Tuesday	Wednesday	Thursday	Friday	Saturday
					1	2
3	4	5	6	7	8	9
10	11	12	13	14	15	16
17	18	19	20	21	22	23
24/31	25	26	27	28	29	30



Toll-Free Tel: (US & Canada): 1.877.BIOLEGEND (246.5343)

Tel: 858.768.5800

[biolegend.com](http://biolegend.com)



# AUGUST 2016

Rat brain horizontal 8  $\mu$ m section stained with Alexa Fluor<sup>®</sup> 568 anti-GFAP (Red), Alexa Fluor<sup>®</sup> 488 anti-MAP-2 (Green), and Hoechst 33342 (Blue).

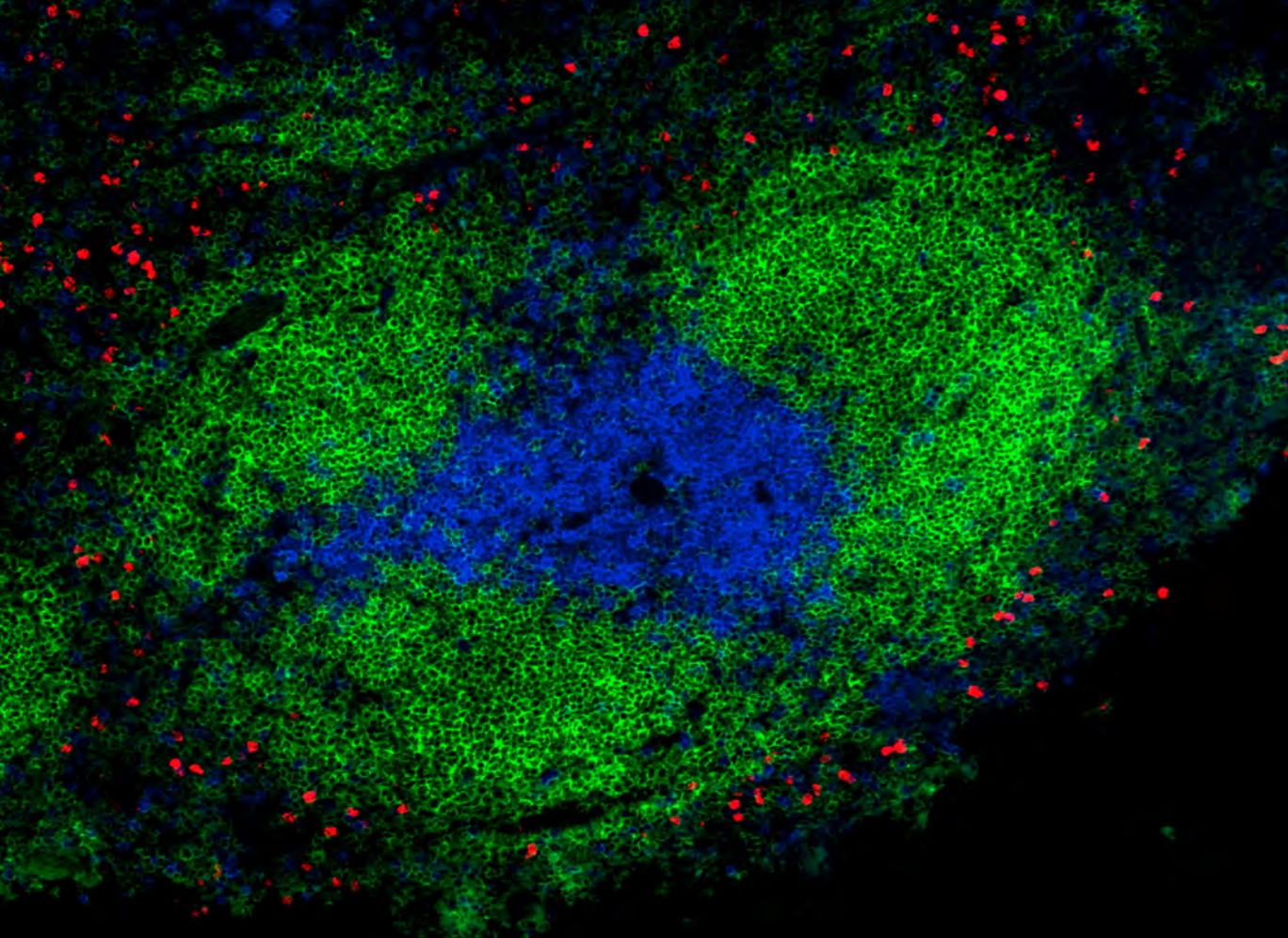
Sunday	Monday	Tuesday	Wednesday	Thursday	Friday	Saturday
	1	2	3	4	5	6
7	8	9	10	11	12	13
14	15	16	17	18	19	20
ICI 2016 Melbourne, Australia (until 8/26)	21	22	23	24	25	26
27	28	29	30	31		



Toll-Free Tel: (US & Canada): 1.877.BIOLEGEND (246.5343)

Tel: 858.768.5800

[biolegend.com](http://biolegend.com)



# SEPTEMBER 2016

Mouse spleen stained with Brilliant Violet 421™ anti-CD3 (clone 17A2) (Blue), Alexa Fluor® 488 anti-CD45R/B220 (clone RA3-6B2) (Green), and Alexa Fluor® 594 anti-Ly-6G (clone 1A8) (Red).

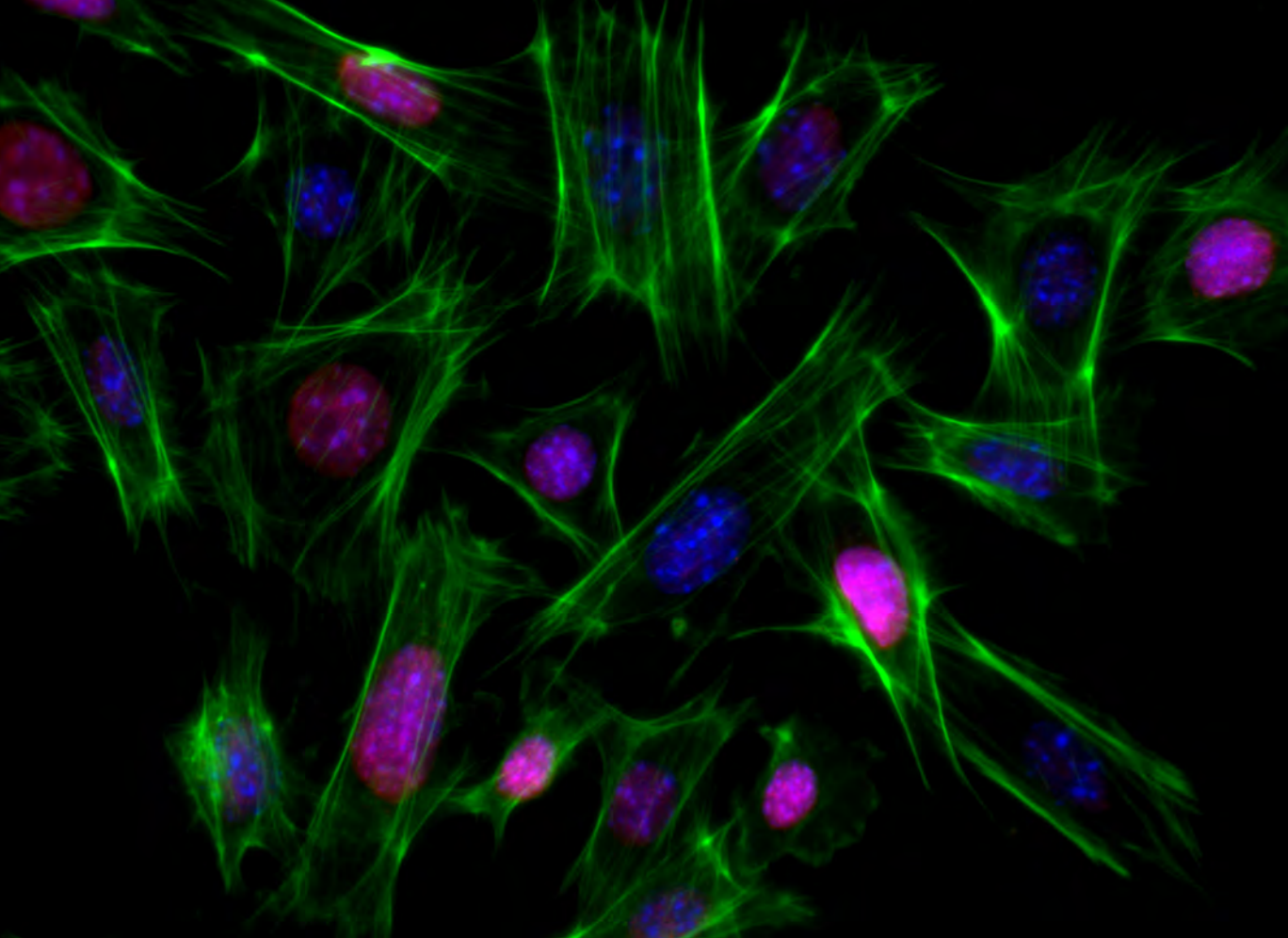
Sunday	Monday	Tuesday	Wednesday	Thursday	Friday	Saturday
				1	2	3
4	5	6	7	8	9	10
11	12	13	14	15	16	17
18	19	20	21	22 First Day of Autumn	23	24
25	26	27 German Society for Immunology Hamburg (until 9/30)	28	29	30	



Toll-Free Tel: (US & Canada): 1.877.BIOLEGEND (246.5343)

Tel: 858.768.5800

[biolegend.com](http://biolegend.com)



# OCTOBER 2016

TE-71 cells stained with rat anti-Ki-67 (clone 11F6) followed by Alexa Fluor® 647 anti-rat IgG (Poly4054) (Red), Alexa Fluor® 488 anti-Phalloidin (Green), and DAPI (Blue).

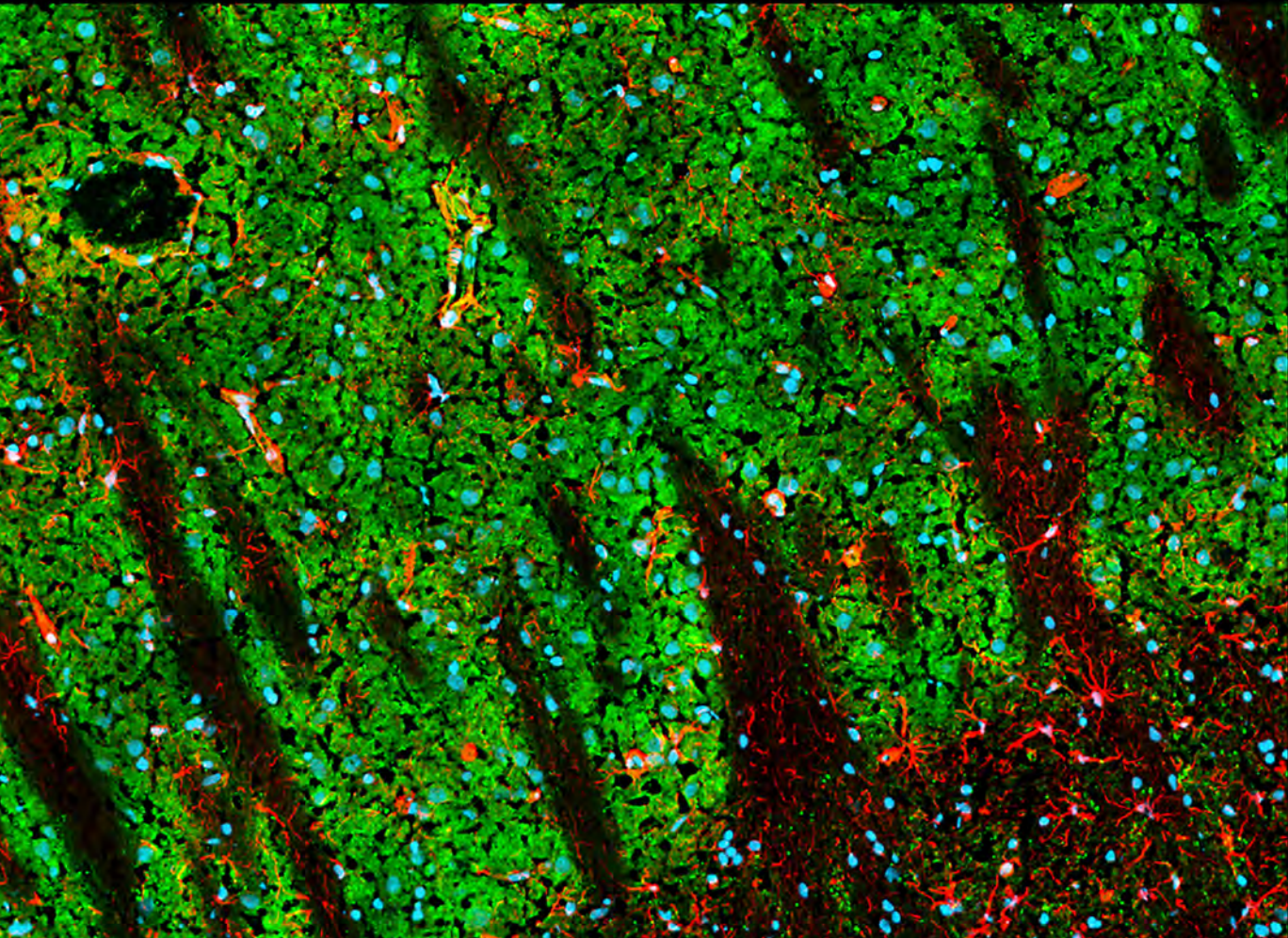
Sunday	Monday	Tuesday	Wednesday	Thursday	Friday	Saturday
						1
2	3	4	5	6	7	8
9	10	11	12	13	14	15
16	17	18	19	20	21	22
23/30	24/31	25	26	27	28	29



Toll-Free Tel: (US & Canada): 1.877.BIOLEGEND (246.5343)

Tel: 858.768.5800

[biolegend.com](http://biolegend.com)





# NOVEMBER 2016

Rat brain horizontal 8  $\mu$ m section stained with Alexa Fluor<sup>®</sup> 568 anti-GFAP (Red), Alexa Fluor<sup>®</sup> 488 anti-MAP-2 (Green), and Hoechst 33342 (Blue).

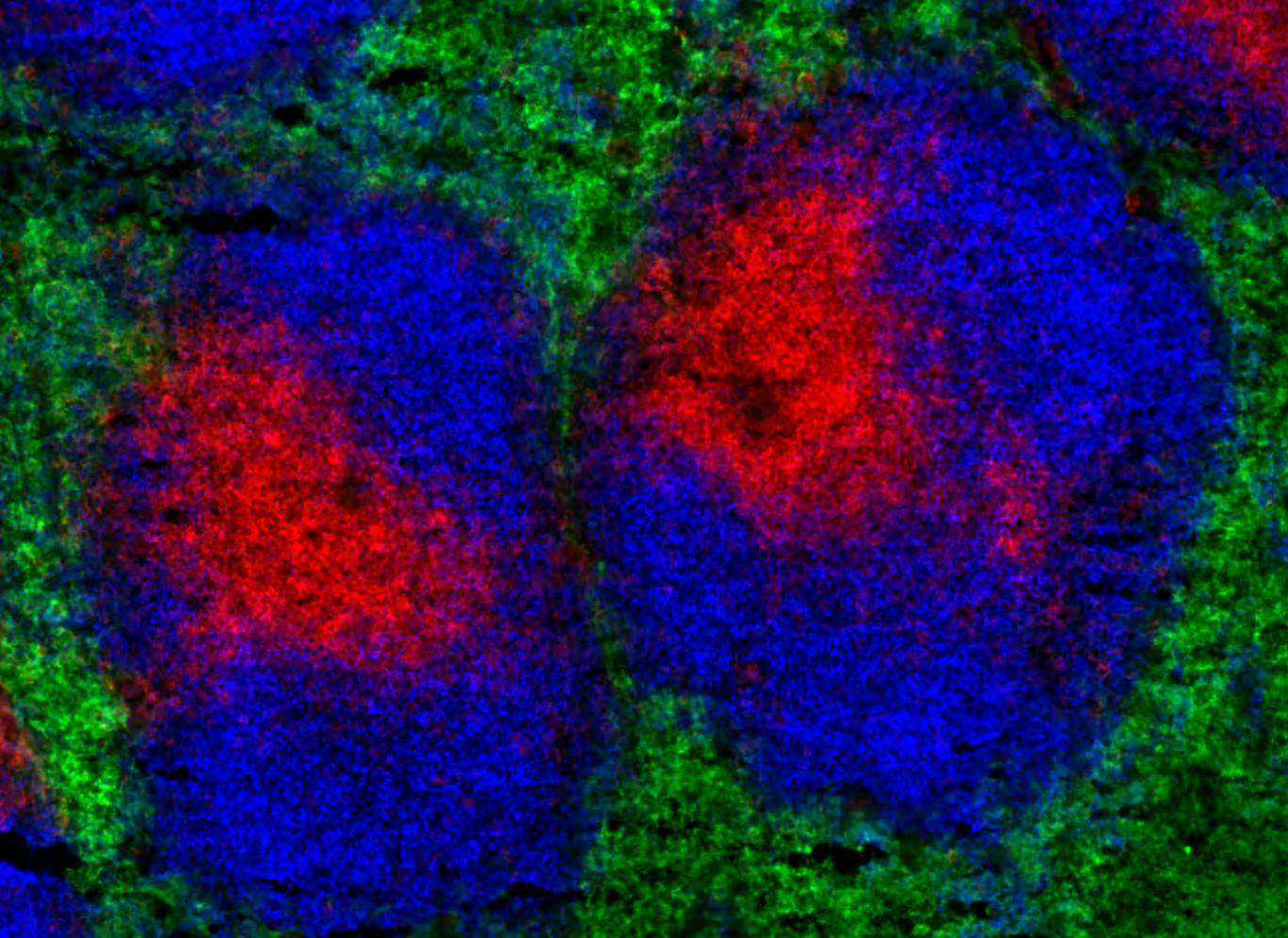
Sunday	Monday	Tuesday	Wednesday	Thursday	Friday	Saturday
		1	2	3	4	5
6	7	8	9	10	11	12 Neuroscience 2016 San Diego, CA (until 11/16)
13	14	15	16	17	18	19
20	21	22	23	24	25	26
27	28	29	30			



Toll-Free Tel: (US & Canada): 1.877.BIOLEGEND (246.5343)

Tel: 858.768.5800

[biolegend.com](http://biolegend.com)



# DECEMBER 2016

Mouse spleen stained with Alexa Fluor® 594 anti-CD5 (clone 53-7.3) (Red), Alexa Fluor® 647 anti-F4/80 (clone BM8) (Green), and Brilliant Violet 421™ anti-CD45R/B220 (clone RA3-6B2) (Blue).

Sunday	Monday	Tuesday	Wednesday	Thursday	Friday	Saturday
				1	2	3 ASCB 2016 San Francisco, CA (until 12/7) ASH 2016 (until 12/6)
4	5	6	7	8	9	10
11	12	13	14	15	16	17
18	19	20	21 First Day of Winter	22	23	24 Christmas Eve
25 Christmas	26	27	28	29	30	31 New Year's Eve



Toll-Free Tel: (US & Canada): 1.877.BIOLEGEND (246.5343)

Tel: 858.768.5800

[biolegend.com](http://biolegend.com)

