

See how Mediray can support your sample preparation workflow.

### Eppendorf Lab Essentials

#### Pipettes

- Ergonomically designed pipettes with high accuracy and precision
- Single channel, multi-channel, manual, and electronic options



Talk to us about our trade-in deals and calibration

#### Centrifuges

- Compact benchtop centrifuges for rapid and efficient particle separation for downstream applications – Options for PCR tubes, microfuges tubes, blood tubes, plates and more.



#### ThermoMixer C & ThermoStat C

- Temperature control combined with mixing (optional) using Eppendorf SmartBlocks with options for; tubes from 0.2 mL to 50 mL as well as plates (MTP, DWP, and PCR plates 96 / 384)



15% off selected Omni Homogenisers until 30th June 2024

### Homogenisers & Tissue Dissociators

#### Omni Homogenisers

- Powerful bead beating or rotor stator tissue homogenisers designed to handle a wide range and volume of sample types.



#### Miltenyi GentleMACS Tissue Dissociators

- For the semi-automated gentle dissociation of tissues into single-cell suspensions or thorough homogenates. Two types of unique gentleMACS Tubes used with the instrument enable the time-saving and easy dissociation or homogenization of tissues in a closed system

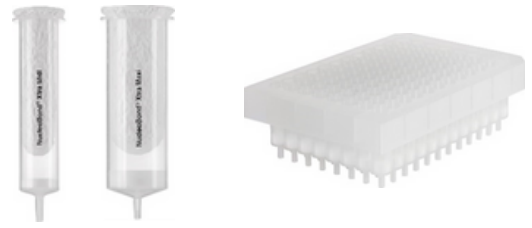


## Macherey Nagel (MN)

### DNA/RNA extraction kits

#### NucleoBond Columns and Plates

- Based on solid phase anion exchange chromatography for ultra-pure transfection-grade plasmid DNA. Gravity flow columns available in; Mini, Midi, Maxi, Mega, Giga, 96-well plate, and preparative scale.



#### NucleoSpin Columns and Plates

Features-

- Chaotropic salt based silica membrane purification
- Tailored purification systems for low (single columns), medium (8 well strips) or high throughput (96 well plates) approaches
- Easy procedure from extra small (XS) to large scale (Maxi)



#### NucleoProtect VET Blood Tubes and Swabs

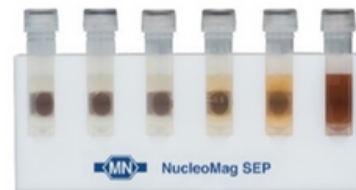
- Prebarcoded tube / swab for the collection, stabilisation, transportation, and inactivation of infectious veterinary specimens for molecular diagnostic



#### NucleoMag Separation Columns

Features

- Adsorption of DNA / RNA in the presence of chaotropic salts to superparamagnetic beads
- Highly pure ready to use nucleic acids
- Easy adaption for automated use (Ask us how!)



## Current MN Extraction kits on promotion!

Product Code	Description
740140.20	NucleoBond RNA Soil (20)
740141.20	DNA Set for NucleoBond RNA Soil
740120.50	NucleoSpin RNA Plant and Fungi (50)
740120.250	NucleoSpin RNA Plant and Fungi (250)
740130.50	NucleoSpin RNA Stool (50)
740470.50	NucleoSpin DNA Insect (50)
740770.250	NucleoSpin Plant II (250)
740770.50	NucleoSpin Plant II (50)
740235.50	NucleoSpin Microbial DNA (50)
740780.250	NucleoSpin Soil (250)
740780.50	NucleoSpin Soil (50)
740472.250	NucleoSpin DNA Stool (250)
740472.50	NucleoSpin DNA Stool (50)
740945.250	NucleoSpin Food (250)
740945.50	NucleoSpin Food (50)
740402.50	NucleoSpin eDNA Water (50)

Product Code	Description
744400.1	NucleoMag Plant (1x96)
744400.4	NucleoMag Plant (4x96)
744330.1	NucleoMag DNA Microbiome (1x96)
744330.4	NucleoMag DNA Microbiome (4x96)
744945.1	NucleoMag DNA Food (1x96)
744945.4	NucleoMag DNA Food (4x96)
744220.1	NucleoMag DNA/RNA Water (1x96)
744220.4	NucleoMag DNA/RNA Water (4x96)

Save up to 25% on selected MN kits until 30th June 2024

## Revvity

## Automated Liquid Handling

### JANUS G3 liquid handler

- Available to support pipetting volumes ranging from 1  $\mu$ L to 5000  $\mu$ L and offering 4 or 8 variable spanning pipetting configurations, allowing accommodate seamless transfers samples from tubes to plates.
- Pipetting options include using disposable tips (sterile and filter tip options available) or reduce your consumable usage with fixed washable tip pipetting.
- The JANUS G3 workstation is a fully capable, compact, and user-friendly automated liquid handling system ready to be configured to your specific needs and improve your labs workflow.



## General consumables

### + Pipette tips

Sterile, non-sterile, filter, non-filter, RNAse/DNAse-free options available



### + Serological Pipettes

For easy sample and solution transfer



### + Microcentrifuge Tubes

Low binding options available for improved sample recovery



### + Centrifuge Tubes

With conical bottom for optimal centrifugation



### + Multi-well Plates

Various formats and surface treatments to suit all applications -

- Microplates
- Cell culture plates
- Deepwell storage plates
- PCR Plates
- Imaging plates



### + Cryopreservation

Cryovials, Cryolabels and Cryoboxes for long-term sample storage



## Related Products

Products	Brands
Antibodies	BioLegend, Miltenyi Biotech, Biotium
Automated Liquid handling	Revvity
Cell Counters	Nexcelom (Revvity)
Cell Culture	Greiner
Cell viability stains	BioLegend, Biotium
Centrifuges	Eppendorf
Cloning	Takara
Conductivity meters	Hanna
Cryolabels	GA International
Cryovials	Greiner
Dead Cell Removal Kit	Miltenyi Biotech
Dissociators	Miltenyi Biotech
DNA, RNA, protein extraction kits	Macherey Nagel
Freezer Boxes	Heathrow Scientific
Gene Function/Editing	Takara, Revvity, Macherey Nagel
Gloves	MUN, Medicom
Homogenisers	OMNI (Revvity)
Incubators	Lab Companion
MACS Microbeads and Isolation Kits	Miltenyi Biotech
Microcentrifuge and Centrifuge Tubes	Greiner, SSIbio, Biotix
Microscopes/Imaging	Zeiss, Revvity
Multi-well plates	Greiner, Biotix, Revvity
NGS preparation	Takara, Revvity
PCR consumables	Greiner
PCR Enzymes	Takara
pH meters	Hanna Instruments
Pipette Tips	Eppendorf, Biotix
Pipettors	Eppendorf
Plate Readers	Revvity
Protein Detection and Analysis	Sysgene (Clever Scientific), Biotium
Protein Enrichment	Takara, Miltenyi Biotech
Protein Purification Kits	Takara, Macherey Nagel
Recombinant Proteins	BioLegend, Miltenyi Biotech
Sample Storage	Greiner
Serological Pipettes	Greiner, Biotix
Shakers and wavers	Lab Companion



## Brands we proudly represent



and more...

Contact our team for pricing and more information



Free Phone 0800 633 472



[sales@mediray.co.nz](mailto:sales@mediray.co.nz)