



# FreeStyle Libre 2

## IMPORTANT:

- Ensure the FreeStyle LibreLink app is running in the background on your phone, or you will not receive glucose alarms.
- If you are using both the app and reader, alarms can only be used on the device you scan the sensor with first.
- FreeStyle LibreLink app notifications can be mirrored on compatible smartwatches<sup>1</sup>

Scan the QR code to watch a short video guide on how to set up glucose alarms on the app:



FreeStyleLibre.co.nz

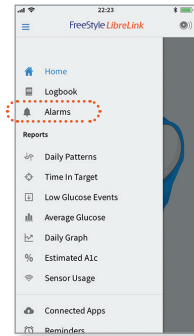
0800 106 100

FreeStyle Libre Customer Care

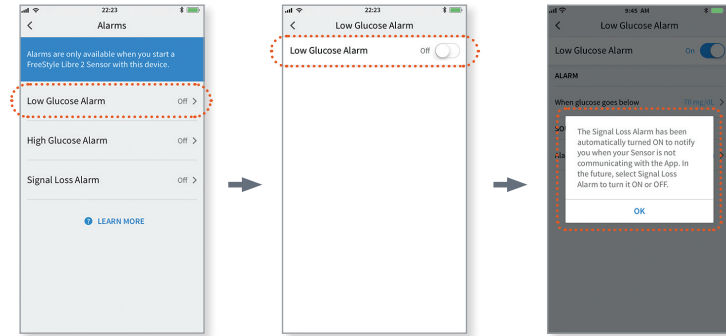
# It's easy to set alarms on your FreeStyle LibreLink<sup>1</sup> app



1 Tap Alarms in the menu<sup>2</sup>

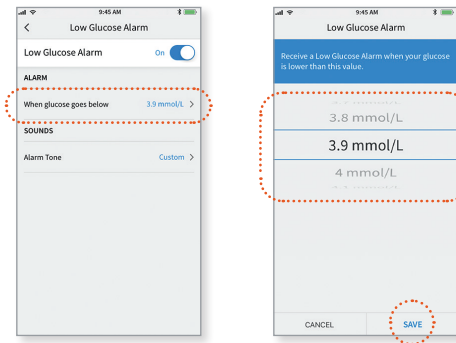


2 Touch **Low Glucose Alarm** and turn on alarm (alarms are off by default)

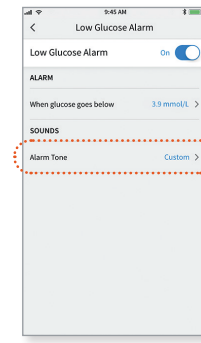


The Signal Loss Alarm turns on automatically when one or more glucose alarms are turned on

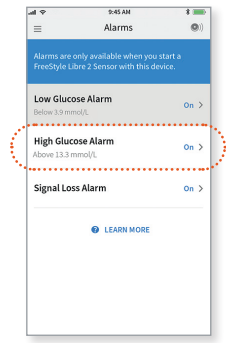
3 Scroll to select **Low Glucose Value**<sup>3</sup>



4 Touch **Alarm Tone** and make your tone choice



5 Set your **High Glucose Alarm** using the same steps<sup>4</sup>



The FreeStyle Libre Flash Glucose Monitoring System and the FreeStyle Libre 2 Flash Glucose Monitoring system is indicated for measuring interstitial fluid glucose levels in people (aged 4 and older) with insulin-dependent diabetes. The indication for children (age 4 – 17) is limited to those who are supervised by a caregiver who is at least 18 years of age. Always read the instructions for use. The system must not be used with automated insulin dosing (AID) systems, including closed-loop and insulin suspend systems. The sensor must be removed prior to Magnetic Resonance Imaging (MRI).

1. The FreeStyle LibreLink app is only compatible with certain mobile devices and operating systems. Please check [www.freestylelibre.com.au/compatibility](http://www.freestylelibre.com.au/compatibility) for more information about device compatibility before using the app. Use of FreeStyle LibreLink requires registration with LibreView. 2. Please see the FreeStyle Libre 2 User's Manual for complete instructions. 3. 3.9 mmol/L is the default Low Glucose Alarm level and can be set between 3.3-5.6 mmol/L. 4. 13.3 mmol/L is the default High Glucose Alarm level and can be set between 6.7-22.2 mmol/L. FreeStyle, Libre, and related brand marks are marks of Abbott. Information contained herein is for distribution outside of the USA only. Mediray New Zealand, 53-55 Paul Matthews Road, Albany, Auckland 0632. [www.mediray.co.nz](http://www.mediray.co.nz). NZBN 9429041039915. ADC-63526 V1.0 Sep2022





# It's easy to set alarms on your FreeStyle Libre 2 reader



## IMPORTANT:

If you are using both the FreeStyle LibreLink app and FreeStyle Libre 2 reader, alarms can only be used on the device you scan the sensor with first.

Scan the QR code to watch a short video guide on how to set up glucose alarms on the reader:



[FreeStyleLibre.co.nz](http://FreeStyleLibre.co.nz)

0800 106 100

FreeStyle Libre Customer Care

- 1 Touch the **Settings**<sup>1</sup> symbol
- 2 Touch **Alarms** then **Change Alarm Settings**
- 3 Turn on **Alarm** (alarms are off by default)
- 4 Use arrows to set **Low**<sup>2</sup> and **High Glucose Alarms**<sup>3</sup>
- 5 See your current **Alarm Settings**

*Signal Loss Alarm is automatically turned ON the first time a glucose alarm is set.*
- 6 Adjust **Sound & Vibration**

The FreeStyle Libre Flash Glucose Monitoring System and the FreeStyle Libre 2 Flash Glucose Monitoring system is indicated for measuring interstitial fluid glucose levels in people (aged 4 and older) with insulin-dependent diabetes. The indication for children (age 4 – 17) is limited to those who are supervised by a caregiver who is at least 18 years of age. Always read the instructions for use. The system must not be used with automated insulin dosing (AID) systems, including closed-loop and insulin suspend systems. The sensor must be removed prior to Magnetic Resonance Imaging (MRI).

1. Please see the FreeStyle Libre 2 User's Manual for complete instructions. 2. 3.9 mmol/L is the default Low Glucose Alarm level and can be set between 3.3-5.6 mmol/L. 3. 13.3 mmol/L is the default High Glucose Alarm level and can be set between 6.7-22.2 mmol/L. FreeStyle, Libre, and related brand marks are marks of Abbott. Information contained herein is for distribution outside of the USA only. Mediray New Zealand, 53-55 Paul Matthews Road, Albany, Auckland 0632. [www.mediray.co.nz](http://www.mediray.co.nz). NZBN 9429041039915. ADC-63526 V1.0 Sep2022

