

GENE-UP® Salmonella 2

All human food products
& production
environmental samples

1

DETECTION

Swabs & Sponges
25g in 225ml BPW
18-26 h at 37°C +/-1
and 41,5 or 42°C +/-1



25 g in 225 ml
BPW
37°C +/- 1 and 41.5
or 42°C +/-1

20 µL

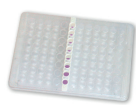


Transfer to
Lysis tubes



Lysis
5 min
2200 rpm

10µL



1. Tap PCR Tubes
2. Remove Caps
3. Visual check
4. Transfer lysed samples
5. Seal optical caps



Spin down 10 sec



<1 h run



CONFIRMATION

2-8°C

72 h

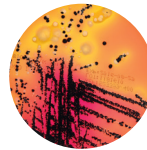
2

CONFIRMATION

2-8°C
72 h

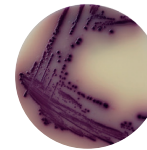


Enriched sample 10 µL



XLD

24 ± 3 h at 35 or 37°C ± 1°C



ASAP™

24 ± 3 h at 35 or 37°C ± 1°C



API® 20 E



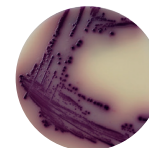
500 µL

SX2

10 ml

6 - 24 h

41,5 or 42 ± 1°C



ASAP™

24 ± 3 h at 35 or 37°C ± 1°C



API® 20 E

Salmonella range

423105
GENE-UP® Salmonella 2
Kit 192 tests
414057
GENE-UP® Lysis
Kit 192 tests
42043
BPW broth
6 x 225 ml
42042
BPW broth
6 x 90 ml
AEB910303/4
AEB910305/2
BPW broth
4 x 3 L / 2 x 5 L
42729
BPW broth
10 x 225 ml mini-bags
AEB125980/
AEB526760
SALSA™ agar
10/20 biplates
AEB523400
AEB523399
XLD agar
20 /120 plates
AEB520090/
AEB520089
ASAP™ agar
20/120 plates
42121/
410370
SX2 broth
20/100 tubes
20100
API® 20E
25 strips
MGNF42
Salmonella spp Latex kit
50 test

GENE-UP[®] Salmonella 2

Raw Beef
Short Protocol

1

DETECTION

2

CONFIRMATION

25 g in 225 ml
Pre-warmed
BPW

8-24 h at
41,5 or 42°C



20 µL

50 g to 375 g
3X
Pre-warmed
BPW

10-24 h at
41,5 or 42°C

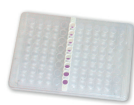


Transfer to
Lysis tubes



Lysis
5 min
2200 rpm

10 µL



1. Tap PCR Tubes
2. Remove Caps
3. Visual check
4. Transfer lysed samples
5. Seal optical caps



Spin down 10 sec



<1 h run

2-8°C

72 h

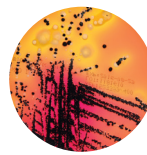


CONFIRMATION

2-8°C
72 h

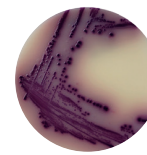


Enriched sample 10 µL



XLD

24 ± 3 h at 35 or 37°C ± 1°C



ASAP™

24 ± 3 h at 35 or 37°C ± 1°C

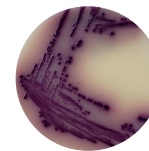


API® 20 E

500 µL

SX2
10 ml

6-24 h
41,5 or 42 ± 1°C



ASAP™

24 ± 3 h at 35 or 37°C ± 1°C



API® 20 E

Salmonella range

423105
GENE-UP[®] Salmonella 2
Kit 192 tests
414057
GENE-UP[®] Lysis
Kit 192 tests
42043
BPW broth
6 x 225 ml
42042
BPW broth
6 x 90 ml
AEB910303/4
AEB910305/2
BPW broth
4 x 3 L / 2 x 5 L
42729
BPW broth
10 x 225 ml mini-bags
AEB125980/
AEB526760
SALSA™ agar
10/20 biplates
AEB523400
AEB523399
XLD agar
20 /120 plates
AEB520090/
AEB520089
ASAP™ agar
20/120 plates
42121/
410370
SX2 broth
20/100 tubes
20100
API® 20E
25 strips
MGNF42
Salmonella spp Latex kit
50 test

Always consult the latest package insert available from our technical library. Contact your local representative for more details.

12-2018 - 9312862 006/GB/A © bioMérieux - Document and/or pictures not legally binding. Modifications by bioMérieux can be made without prior notice - BIOMÉRIEUX, the blue logo, API, ASAP, GENE-UP and SALSA are used, pending and/or registered trademarks belonging to bioMérieux, or one of its subsidiaries, or one of its companies. Any other name or trademark is the property of its respective owner: bioMérieux SA 673 620 399 RCS Lyon / Printed in France by ATIMCO 896 380 169 RCS Saint-Malo B. Photographs by bioMérieux. Illustrations by Greg Newbold.